

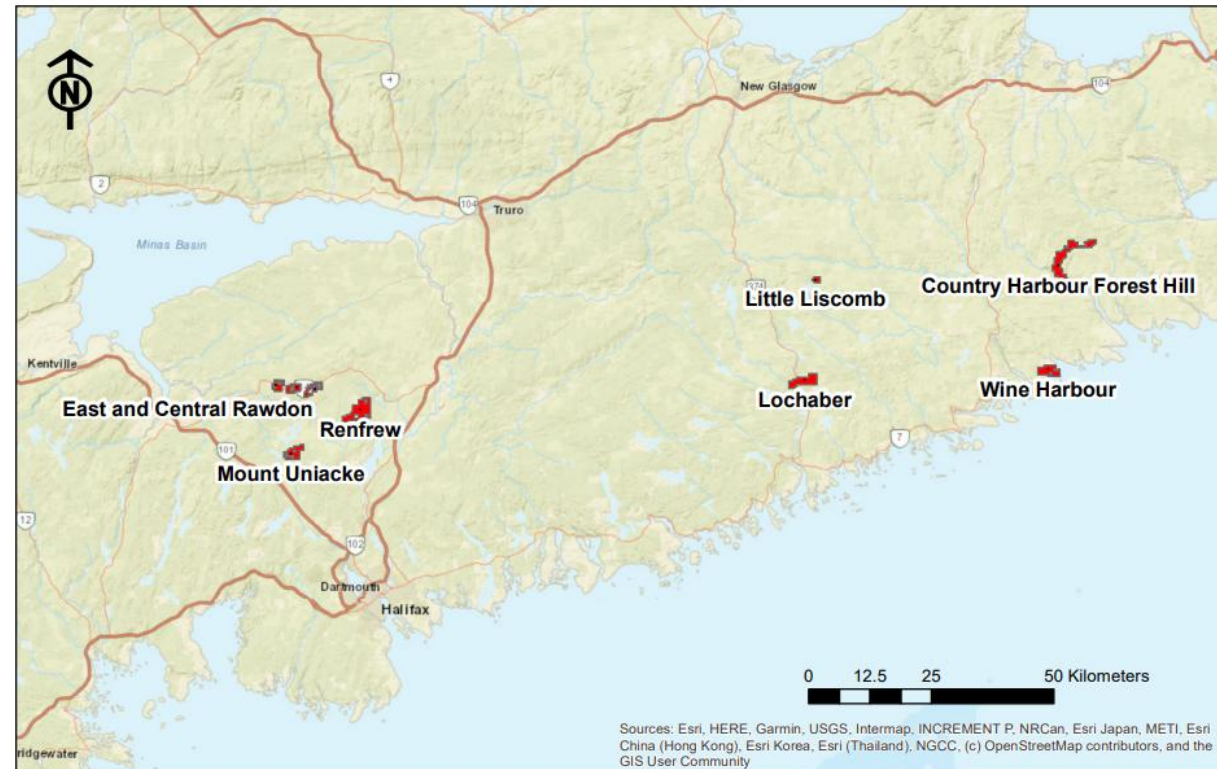
# Country Harbour

Golden Circle Project  
Nova Scotia, Canada

# Golden Circle Project

The Golden Circle Project comprises eight former producing gold properties in a 120 km by 30 km area of central Nova Scotia.

**PLAYFAIR**  
M I N I N G L T D .



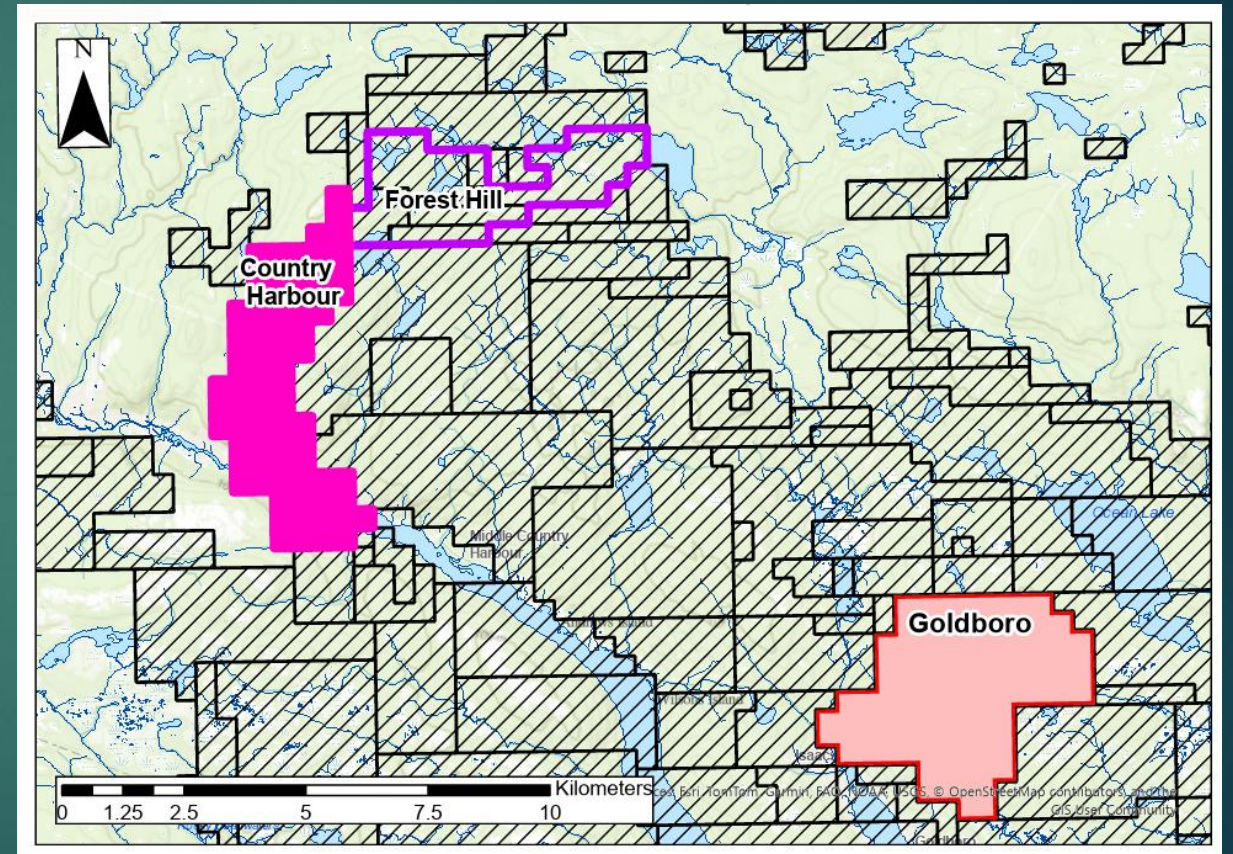
**Golden Circle Project**

# Country Harbour Golden Circle Project Nova Scotia, Canada

Country Harbour is an easily accessible, historic gold producer. It is adjacent to Playfair's Forest Hill property and is located about 12km from NexGold's advanced Goldboro project.

Gold was discovered in the Country Harbour area in 1861 but there was little mining until the 1890's when production was largely from the Prince, Stuart and Antigonish mines. All work had ceased by 1911.

Work resumed from 1936 to 1941 when some old workings were dewatered, bulk sampled and a small amount mined.

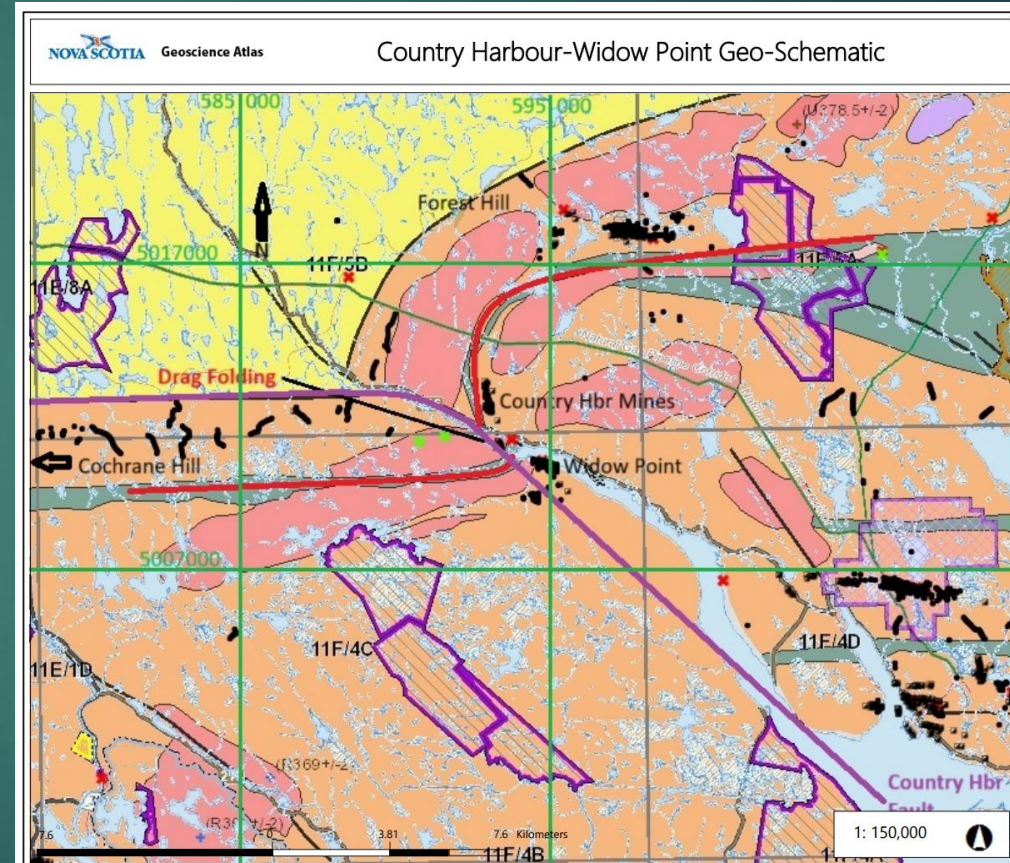




# Country Harbour Golden Circle Project Nova Scotia, Canada

The gold-bearing rocks in the Meguma sediments in this area have undergone a major dislocation caused by the Country Harbour Fault which has a left lateral displacement of almost 3 km.

The result is that, unusually for Nova Scotia, the gold-bearing zones at Country Harbour strike more N-S than the typical E-W.

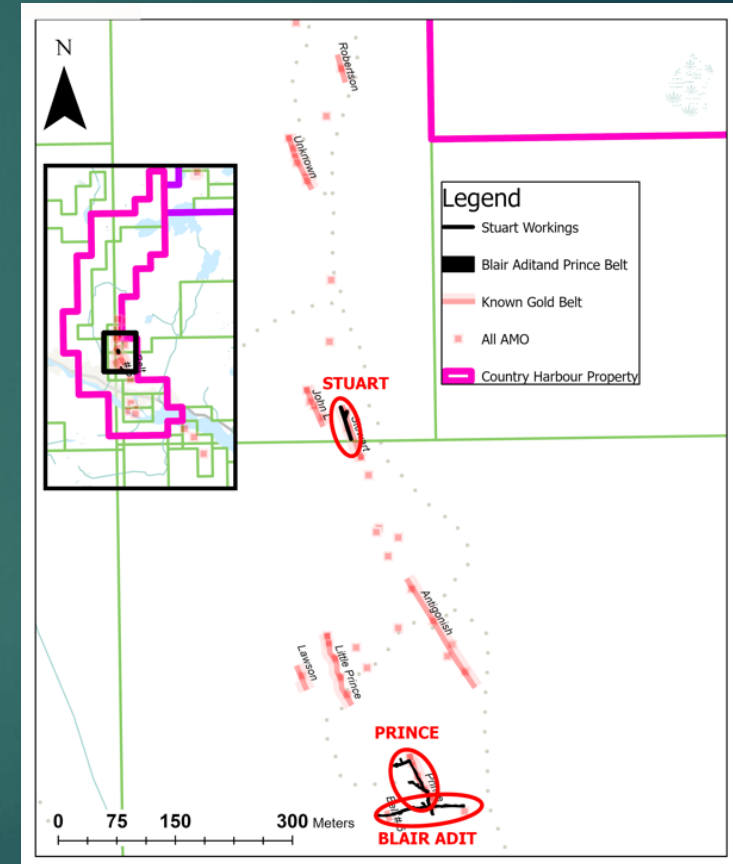


# Country Harbour Golden Circle Project Nova Scotia, Canada



From 1936 to 1938, Maritime Minerals carried out serious exploration including bulk sampling at the Prince and Stuart workings together with a crosscutting adit “The Blair Adit” which was opened for 480 feet (146 m).

**Very encouraging results were obtained from the bulk samples which were processed in the Stuart Mill.**

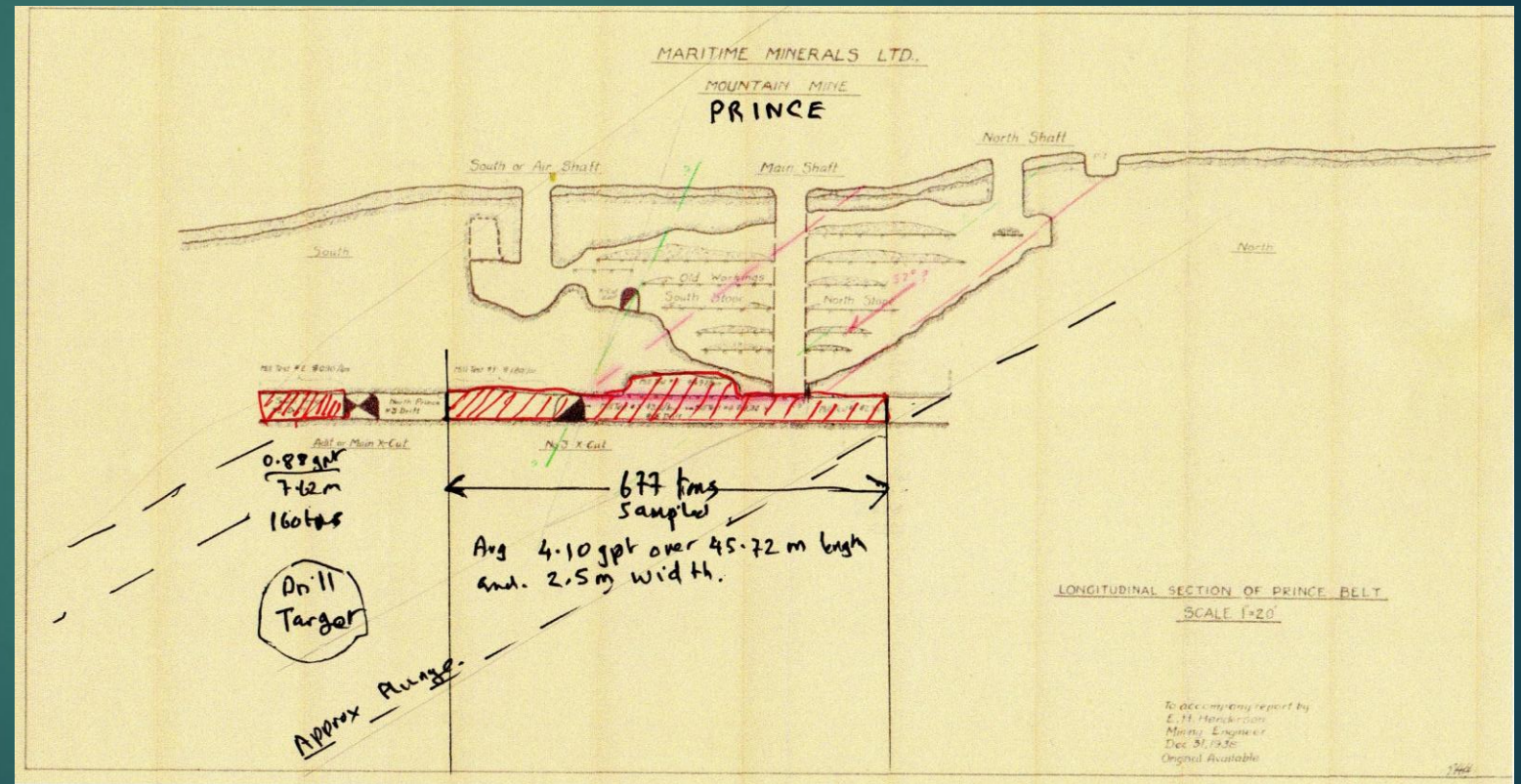


# Country Harbour Golden Circle Project Nova Scotia, Canada

Underground bulk sampling on the lowest level (75 feet or 23 metres) of the Prince workings in 1938 resulted in 837 tons which were processed in the Stuart Mill.

Five Mill Samples were taken over a continuous drift length of 150 feet (45.72 m) with an average width of 8.2 feet (2.5m) and gave an average grade of 0.12 opt gold (4.1 gpt).

A small amount of mining occurred in 1941 above this level. **No deeper work is recorded.**

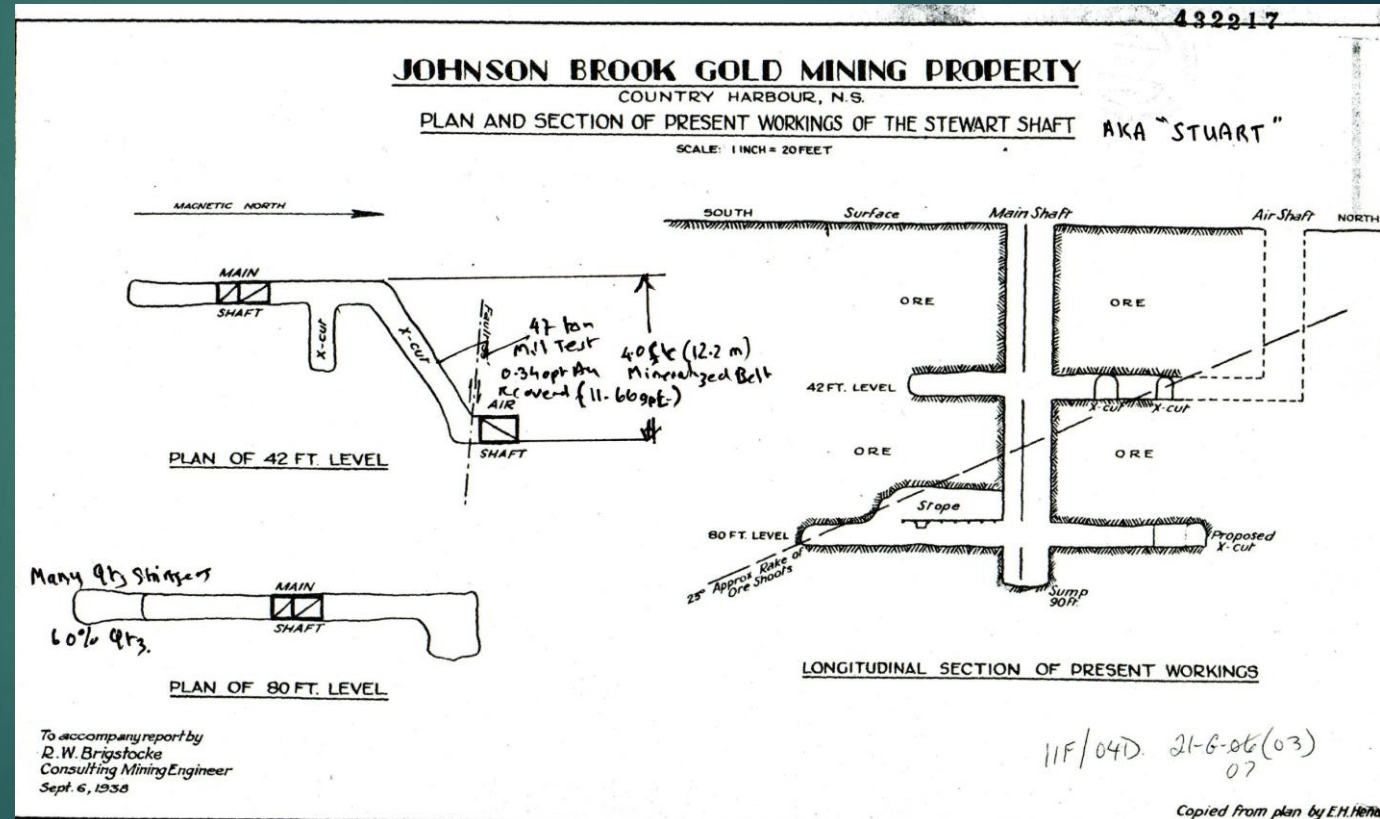


# Country Harbour Golden Circle Project Nova Scotia, Canada

At the Stuart Mine, levels were developed at 42 feet (12.8 metres) and 80 feet (24.4 metres).

In 1938, a 47-ton Mill Sample was taken on the 42-foot level was reported to grade 0.34 opt (11.66 gpt) gold within a 40 foot (12.2 metre) thick belt.

A small amount of mining occurred in 1941. **No deeper work is recorded.**

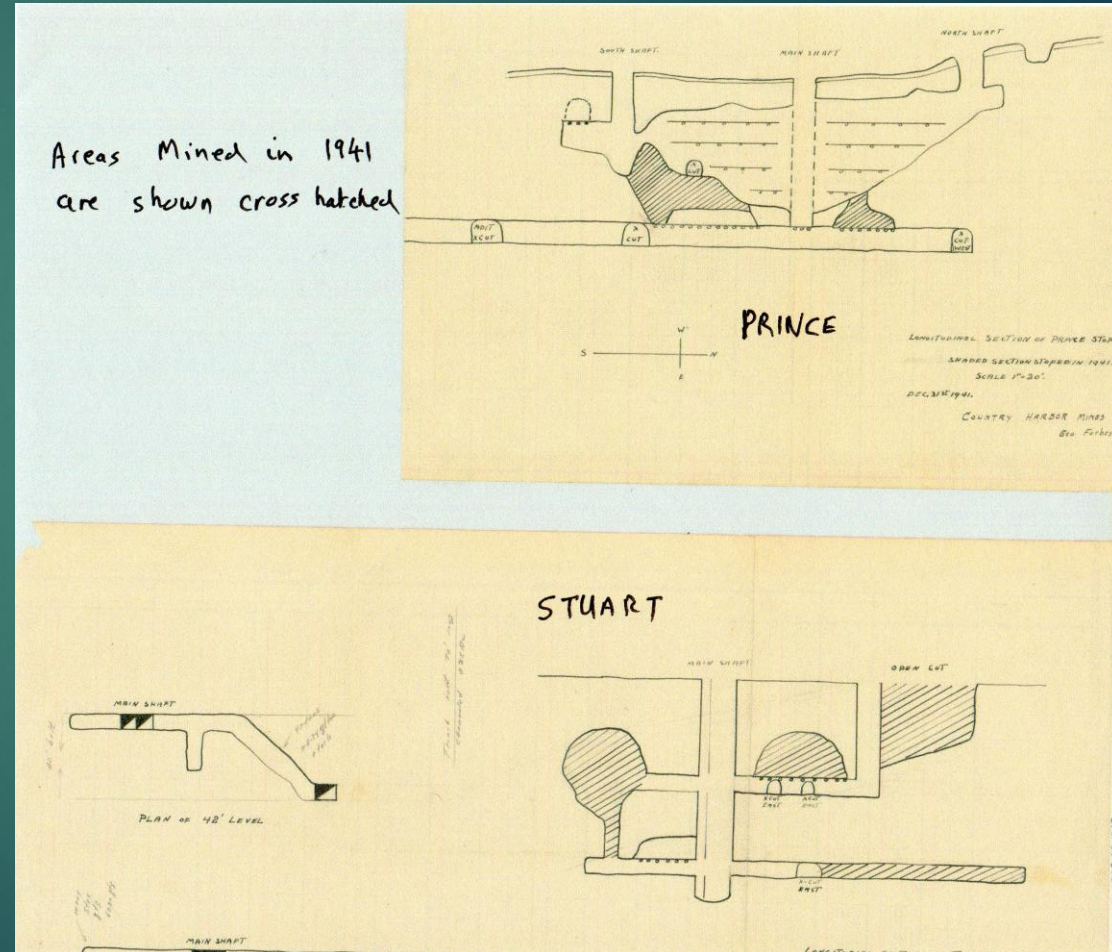


# Country Harbour Golden Circle Project Nova Scotia, Canada

Country Harbour, like many other Canadian gold mines, closed in 1941 primarily because the federal government reclassified gold mining as a “non-essential industry”. Labour, machinery and materials were redirected to “war-critical” base metal production.

1941 was a turning point marking the end of a long-running era of small-industry focus on gold.

**There is no record of any mining on the property in the 85 years since 1941.**



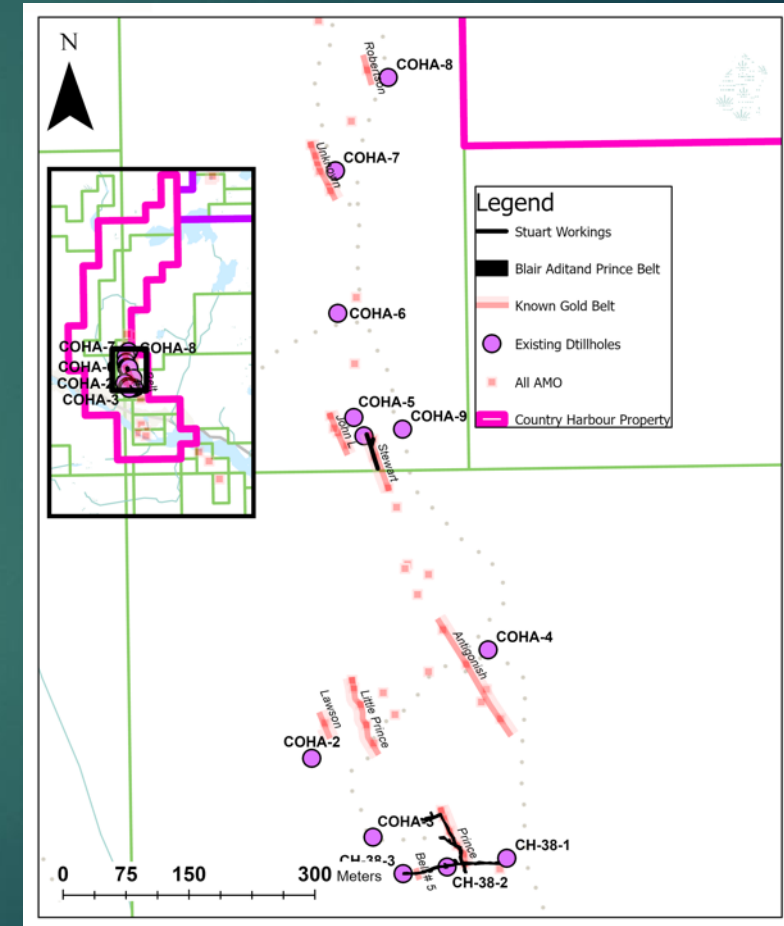
# Country Harbour Golden Circle Project Nova Scotia, Canada

## Diamond Drilling

Only 12 drillholes are recorded on the property:

- 3 holes were drilled by Maritime in 1938 along the Blair Adit. No assays are available however, later chip sampling of the Blair Adit showed 0.06 opt (2.17 gpt) gold over 15 feet (4.57m) in Belt No.5.
- 1 hole was drilled in 1970 by Mex Explorations near the Stuart Shaft (exact location unknown). A wide sheared and mineralized interval is reported in this hole, but much core was lost. Visible gold was reported in two areas. One interval returned 0.21 opt (7.2gpt) gold over 3.7 ft (1.12m).
- In 1981, Paragon Explorations drilled 8 AQ holes totalling 772 metres generally targeting areas near old mine shafts. The highlight was an intersection of the Prince Belt, assaying 2.44 opt (83.64 gpt) gold over 1 ft (0.3m) in hole COHA-3.

**No further drilling is reported on the property in the 45 years since the Paragon program.**

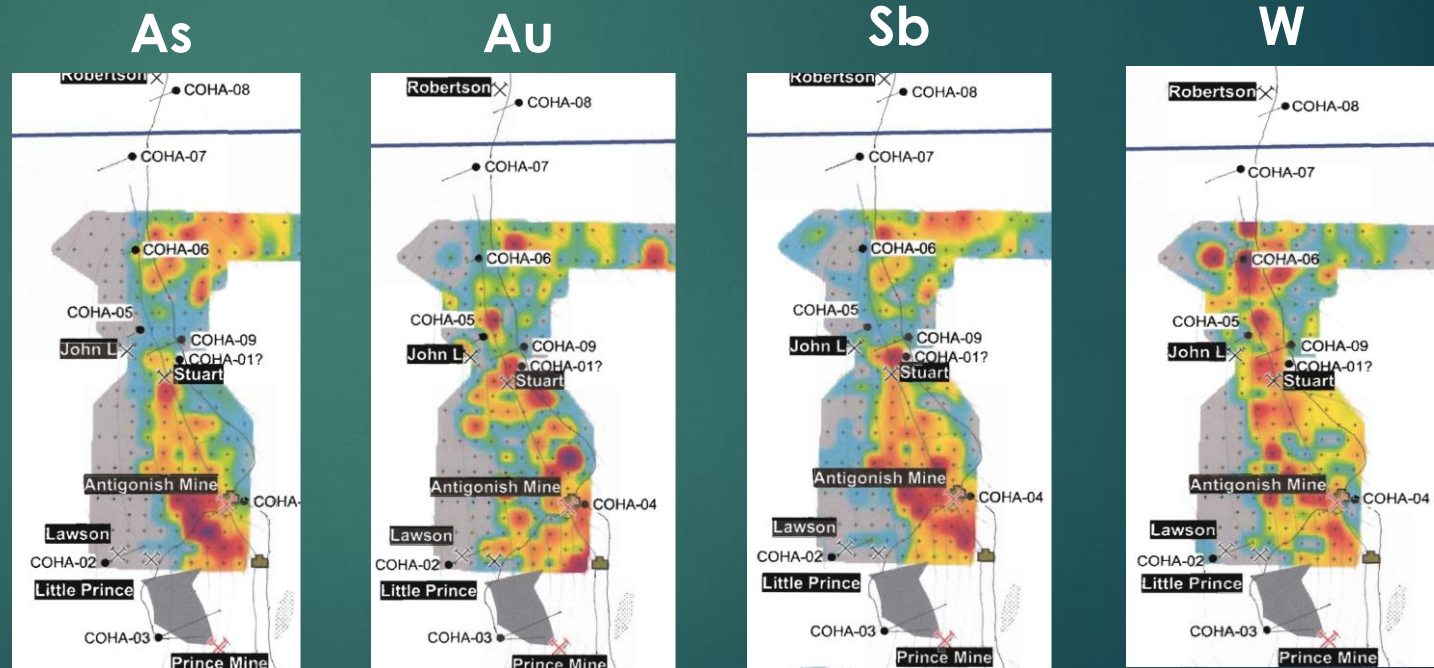


# Country Harbour Golden Circle Project Nova Scotia, Canada

Paragon (1981), Seabright (1988) and Hudgetec (2006) all carried out “B” horizon soil sampling. The results were compiled by Hudgetec (2006) and are shown here. The red colours represent the top 5% of values.

Coincident arsenic, gold, antimony and tungsten anomalies cover an area of about 600m by 200m around the known gold occurrences. Most soil anomalies remain untested by drilling.

## “B” Horizon Soil Anomalies



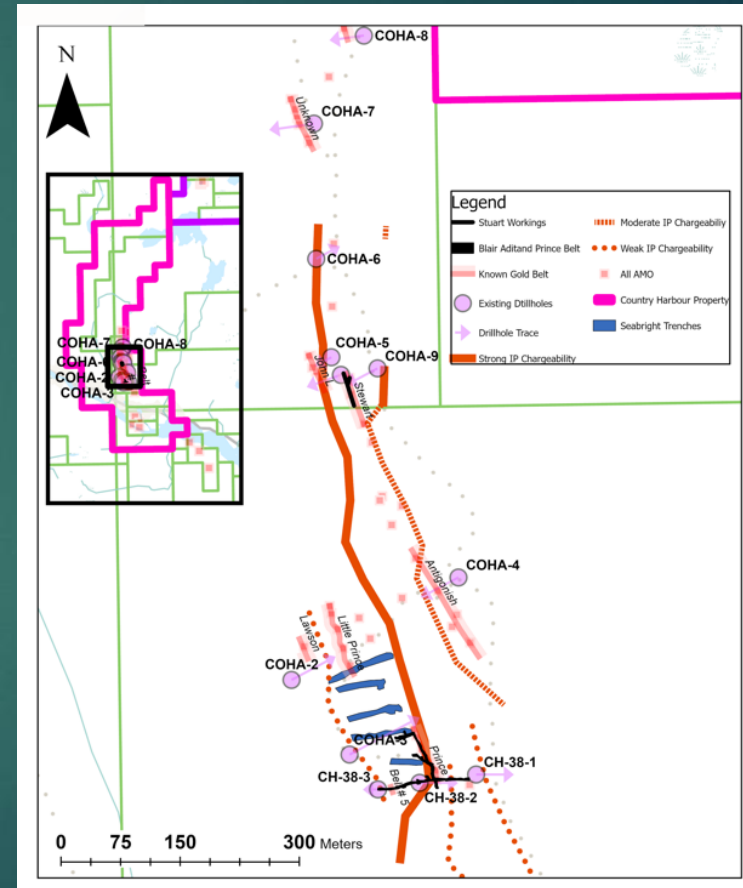
# Country Harbour Golden Circle Project Nova Scotia, Canada

In 1988, in addition to the soil sampling Seabright carried out gradient IP surveys and trenching.

The gradient IP showed a strong high chargeability anomaly for the full 800m N-S extent of the survey. This anomaly is, in part, coincident with the Prince workings. A moderate 500m long high chargeability anomaly is in part coincident with the Antigonish workings.

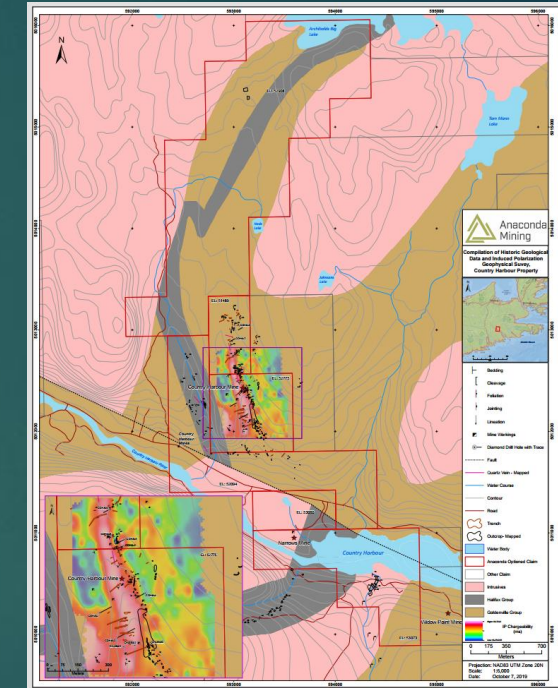
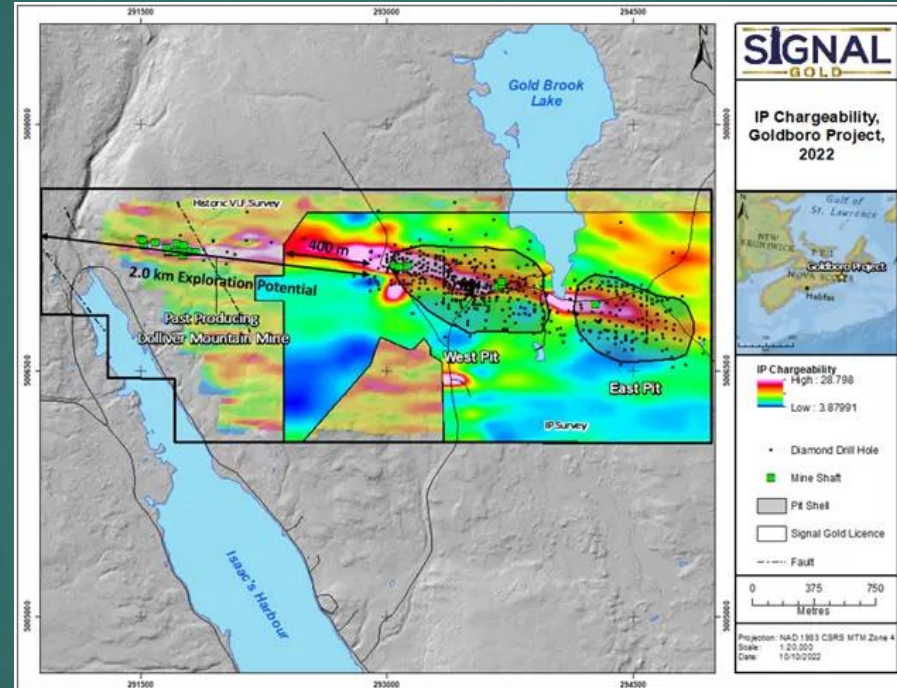
**Most of the length of these IP anomalies have not been tested by drilling.**

Seabright obtained a few sporadic gold values from five extensive trenches to the North and West of the Prince workings



# Country Harbour Golden Circle Project Nova Scotia, Canada

The IP high chargeability response at Nexgold's advanced Goldboro deposit is quite similar to that over the Country Harbour gold occurrences.



## IP High Chargeability

Goldboro  
(From Signal NR)

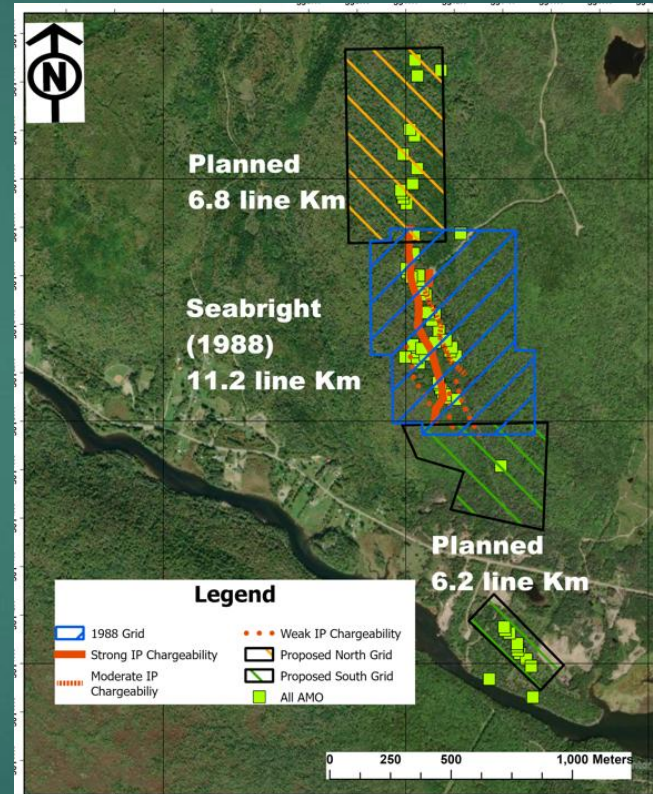
Country Harbour  
(From Anaconda Compilation)

# Country Harbour Golden Circle Project Nova Scotia, Canada

Playfair plans a two-pronged \$600,000 exploration program at Country Harbour comprising:

- A thirteen-line-kilometer extension of the existing gradient IP and “B” horizon soil surveys.
- A seventeen-hole program totaling 1,475 metres.

Most of these holes will test IP high chargeability anomalies which have not been previously drilled.

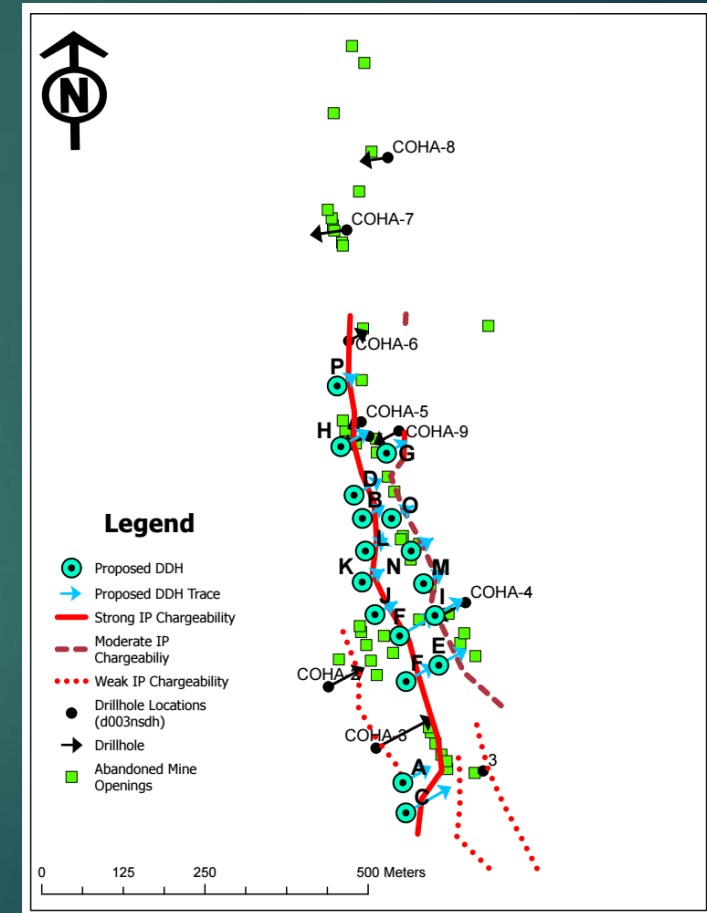


Planned IP and soil sampling extension grids

## Planned Drillholes

A seventeen-hole program totaling 1,475 metres is planned. The holes are designed to test targets already defined by previous work.

- Three holes will test the down plunge extension of mineralization previously sampled in underground workings.
- Ten holes will test IP chargeability anomalies.
- Four holes will test gold occurrences found in outcrop or previous drilling.





## Share Structure:

Shares Outstanding	85,503,395
Stock Options	8,500,000
Warrants	42,617,427

## Major Shareholders:

- Insiders and Friends 18%
- Al Brimacombe 15%
- European Institutional 5%

## Management:

Donald G. Moore – CEO & Director  
 Tel: 604-377-9220  
[dmoore@wascomgt.com](mailto:dmoore@wascomgt.com)

D. Neil Briggs – Director  
 Tel: 604-562-2578  
[nbriggs@wascomgt.com](mailto:nbriggs@wascomgt.com)

Greg Davison – Director  
 Tel: 250-521-0444  
[davisonandassociates@gmail.com](mailto:davisonandassociates@gmail.com)

Suite 738-1489 Marine Drive  
 West Vancouver, BC  
 Canada V7I 1B8

Telephone: 604-377-9220  
 Toll Free: 1-888-244-6644  
[info@playfairmining.com](mailto:info@playfairmining.com)  
[www.playfairmining.com](http://www.playfairmining.com)