

Brownfield Exploration Copper-Rich VMS Deposits South Central Norway

1 Mine Area

2
3 Old Mines

4 Adit Portal

5 Accommodations

Playfair's Opportunity

100% Owned.

7 Former Producing Mines.

4 Other Significant Mineral Deposits.

298 Square Kilometres.

First World Country.

Road Accessible.

Drill Targets Already Developed.

Drilling Planned.

Norway Offers Many Exploration Opportunities

3

Norway is a country with a rich copper mining history. The copper used in constructing the Statue of Liberty was mined in Norway.

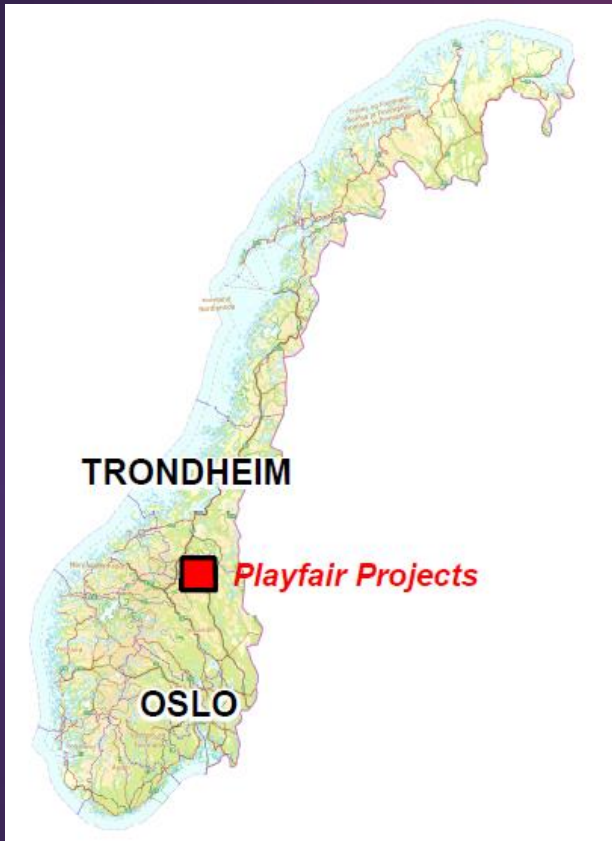
The former producing copper mines on Playfair's projects are some of the oldest in Norway. Several of them were first mined in the 17th and 18th centuries.

Many mines ceased operations in the 1920's when poor economic conditions resulted in a continuing depressed copper price.

Mineral exploration in Norway was much reduced once the large-scale development of Norway's North Sea oil and gas began in the 1970's.

The lack of recent regional copper exploration in Norway offers significant opportunities.

Norway is a First World Country



Norway is a constitutional monarchy with a parliamentary system of government in Northern Europe; it covers an area of about 385,000 square kilometres and has a population of about 5.4 million people.

Norway has a highly developed economy, with a mix of industries such as oil and gas, mining, fishing, and tourism. It is one of the world's wealthiest countries, with a high standard of living.

The Norwegian State Oil Fund is one of the largest sovereign wealth funds in the world, with assets worth over \$1 trillion.

Norway is a modern, highly-developed country with a small but very strong economy.

Norway is a safe and straightforward place to do business.

Playfair Recognized the Opportunity

The Norwegian Government is encouraging the Hunt For Minerals to supplement their fossil fuels industry.

Extensive mineral exploration databases are freely available from the Norwegian Government.

Playfair has acquired a 100% interest in two district-scale projects covering almost 300 square kilometres.

Seven former producing mines and four other significant mineral occurrences are included.

It is almost 40 years since the last comprehensive regional exploration on the projects.

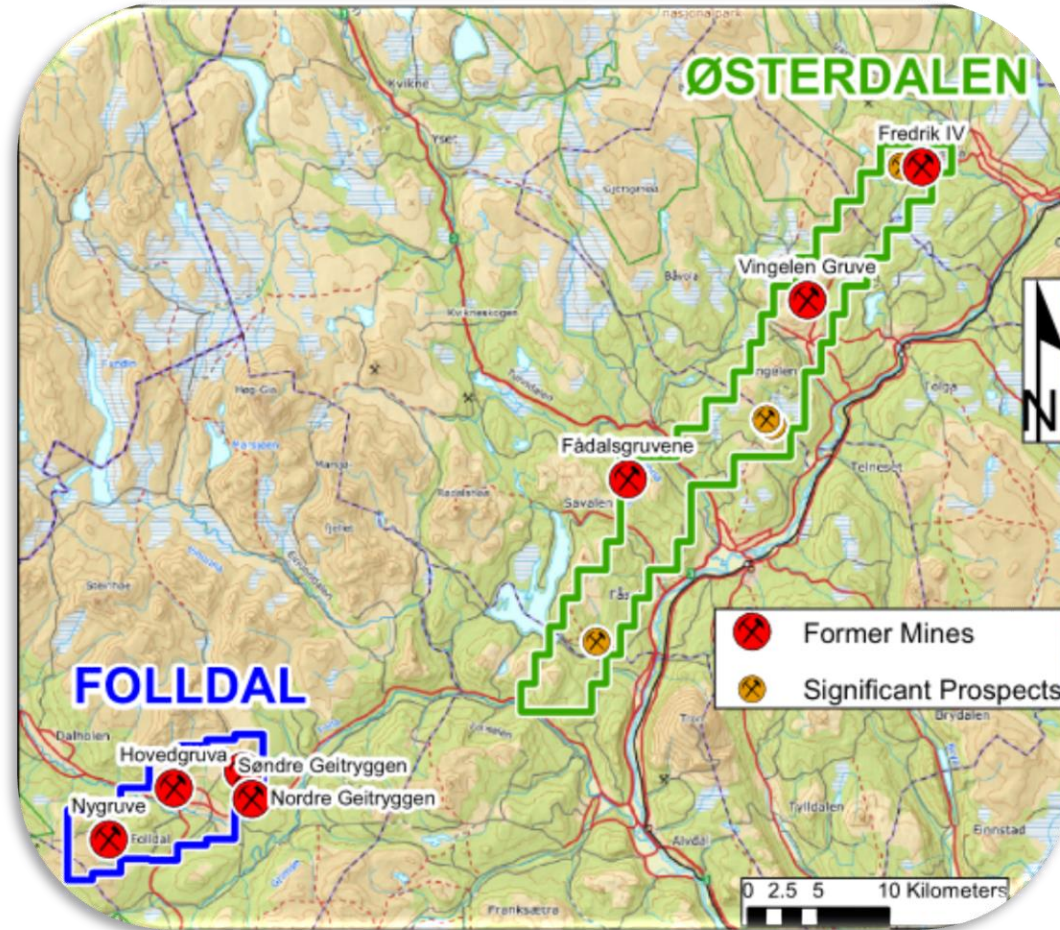
Playfair has seized this opportunity and has been actively exploring in Norway since 2019

Two accessible projects

Playfair's two projects target the discovery of copper-rich VMS deposits.

Together the two projects contain seven former mines, four other significant mineral occurrences and many other known mineral occurrences.

There has been little extensive regional exploration in the last 40 years.



Playfair's highly prospective projects are underexplored by modern methods.

Playfair's projects are easily accessible by road and about 100 km from Trondheim, Norway's third largest city.

Exploration near Former Mines

Deep Exploration Opportunities:

Deposits in the area often have shallow plunges of 20° to 30° and the potential down-plunge continuation of known mineralization is not at great depths.

- **Former producing mines not closed because they ran out of ore**
 - Søndre Geitryggen closed because workers were needed in the new, large mine at Tverrfjellet.
- **Opportunities**
 - Vingelen Mine is not delimited at depth or along strike
 - Sivilangen is open to depth.
 - Vardtjonna has not been explored at depth
 - Fødal Mine is open at depth and along strike

Playfair's exploration to date has not targeted deeper ore possibilities.

FOLLDAL

4 Former VMS Mines

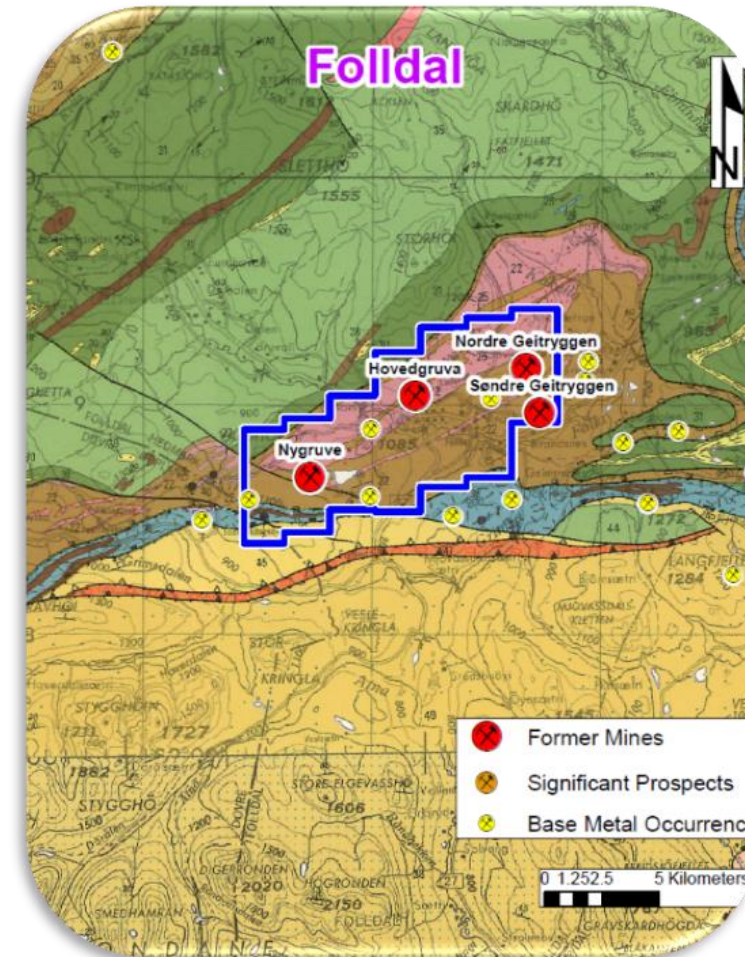
Former Mines

Folldal opened in 1747, and the first mining lasted until 1807. After that period, regular production was carried out in several periods until 1941. In total 1.15 mill.t. of ore with 1.9 % Cu and 1.1 % Zn was produced.

Nordre Geitryggen produced 2.5 mill.t. of ore with 1.3 % Cu, 3.2 % Zn, 0.2 % Pb, 31 ppm Ag and 0.2 ppm Au, mainly between 1936 and 1970, and was the largest of the Folldal mines

Søndre Geitryggen Mined for copper in the earliest periods 1770-1848 and 1860-1878. In the last mining period (1952-1965) about 0.5 Mt of ore grading 0.8 % Cu, 2.4 % Zn was taken out. **Mining ended because workers were needed in the new, large mine at Tverrfjellet, not because the deposit was mined out.**

Nygruva in production in three periods from 1783 to 1952. In total 0.3 Mt ore was produced with 0.85 % Cu and 3.5 % Zn. In the stratigraphic footwall of the massive ore are irregular lenses of zinc- or copper-rich ore, which **locally are enriched in gold (up to 7.1 gpt).**



VMS deposits not mined out.
Gold enriched in some areas.

North Østerdalen

3 Former VMS Mines

Former Mines

Fådalsgruvene opened in 1660, there was sporadic production in 5 periods ending in 1788. Little is known about this mine.

Vingelen gruve discovered in about 1800. About 30 000 t of ore was produced in several periods between c.1800 and 1920 estimated at 1.3 % Cu. **The deposit is not delimited.**

Fredrik IV opened in 1707 and operated sporadically until 1908. NGU sampling of the old dumps showed up to 10% Cu with silver values up to 30 gpt and **gold values up to 4.7 gpt.**

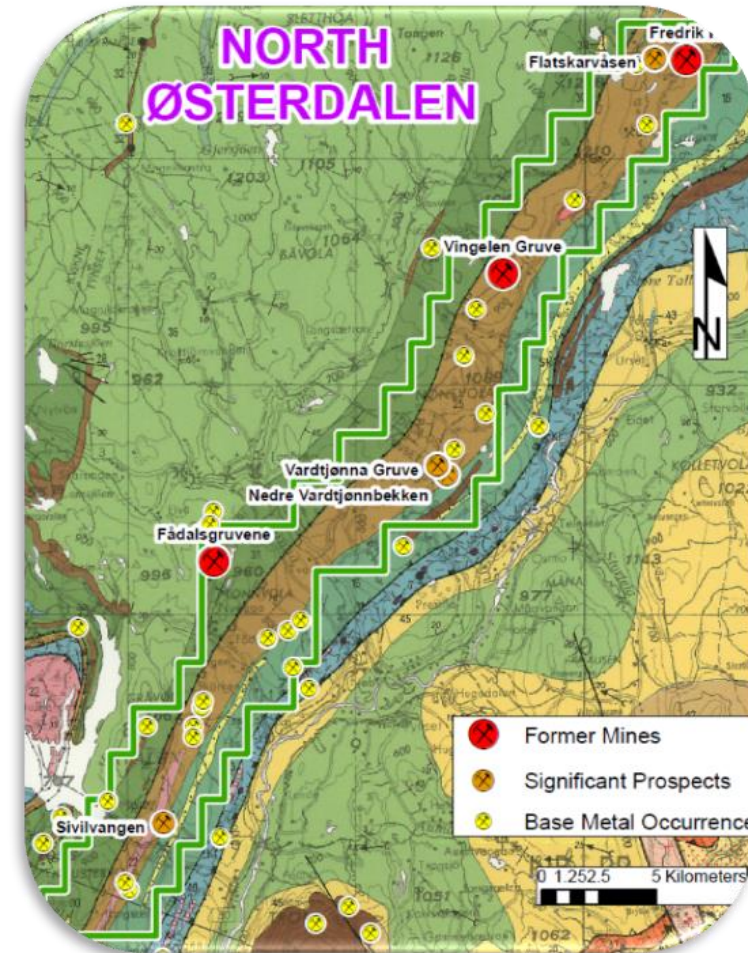
Significant Mineral Occurrences

Sivilangen discovered in 1917 exploration in 1953, 1974-75 and 1990-91. a non-43-101 compliant estimate suggested that it contains about 0.4 Mt with 0.69 % Cu and 4.31 % Zn. **The deposit is open to depth.**

Vardtjønn a large mineralized zone at least 1.2 km long and 130m wide. There are eight smaller showings in the area, of which five are associated with a major alteration zone of quartz-sericite schist

Nedre Vardtjønnbekken a small showing sampled by NGU in 1989. Two analyses of the massive ore yielded 0.5, 1.3 % Cu, 1.5,9.1 % Zn, 0.1-0.3 % Pb, 26, 27 gpt Ag and 9.6, 11.0 gpt Au.

Flatskarvåsen sampling of the old dumps by NGU showed up to 4.2% Cu with **gold values up to 4.8 gpt.**



**Unmined deposits.
Significant gold values in several places.**

Playfair's Opportunity

100% Owned.

7 Former Producing Mines.

4 Other Significant Mineral Deposits.

298 Square Kilometres.

First World Country.

Road Accessible.

Drill Targets Already Developed.

Drilling Planned.



PLAYFAIR
M I N I N G L T D .

Share Structure:

Shares Outstanding	127,497,160
Stock Options	10,000,000

Major Shareholders:

- Insiders and Friends 9%
- European Institutional 15%
- Al Brimacombe 19.9%

Management:

Donald G. Moore – CEO & Director
Tel: 604-377-9220
dmoore@wascomgt.com

D. Neil Briggs – Director
Tel: 604-562-2578
nbriggs@wascomgt.com

Greg Davison – Director
Tel: 250-521-0444
davisonandassociates@gmail.com

Suite 738-1489 Marine Drive
West Vancouver, BC
Canada V7I 1B8

Telephone: 604-377-9220
Toll Free: 1-888-244-6644
info@playfairmining.com
www.playfairmining.com