

**MODERN  
EXPLORATION IN  
SOUTH CENTRAL  
NORWAY**

# Playfair Mining

**Drilling Begins First  
Week of June 2022**

# RKV Project

## MODERN EXPLORATION IN SOUTH CENTRAL NORWAY

TSX.V PLY Frankfurt - P1J1 OTC - PLYFF

### THE OPPORTUNITIES

- Norwegian Government is encouraging the Hunt For Minerals to supplement their fossil fuels industry.
- Playfair is focusing on three opportunities:
  - RKV Project: VMS exploration.
  - RKV Project: Nickel Exploration.
  - Folldal Project: VMS Exploration.

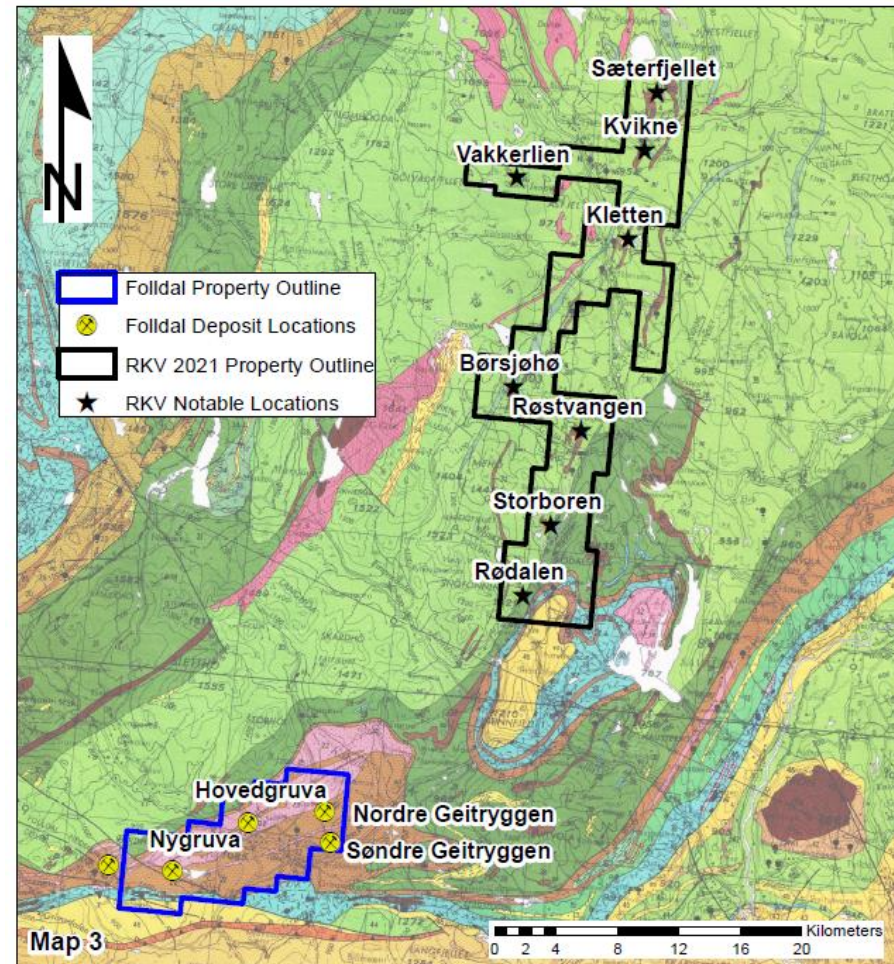
# Playfair Mining

## PROJECTS IN SOUTH CENTRAL NORWAY



TSX.V PLY Frankfurt - P1J1 OTC - PLYFF

## RKV and Folldal Projects



# Playfair Mining

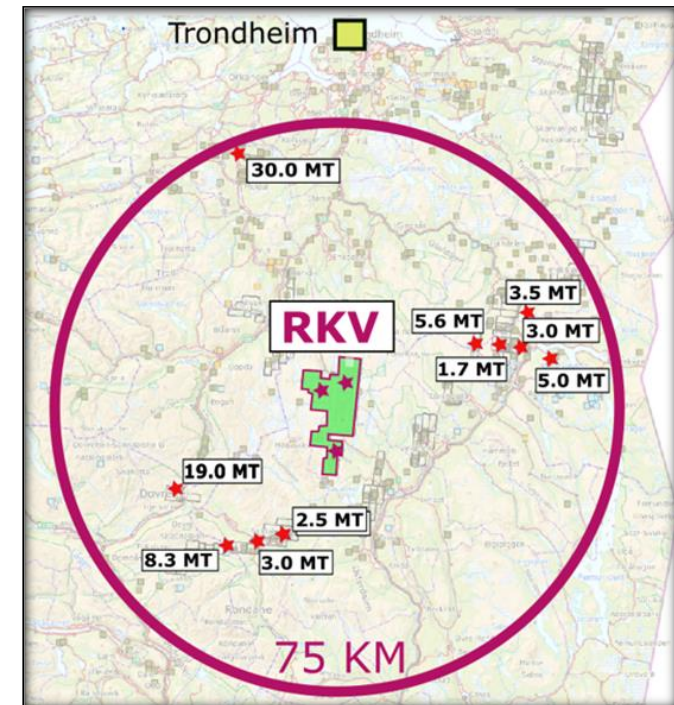
## RKV Project, Norway

TSX.V PLY Frankfurt - P1J1 OTC - PLYFF

### THE PROJECT



- Playfair selected and acquired 100% ownership of a large (currently 201 km<sup>2</sup>) highly prospective under-explored project in a historic copper producing district in Mining Friendly Norway.
- Over 80 million tons are known in 10 large VMS copper and zinc deposits within 75 Km of the RKV project.
- The RKV Project contains 2 past producing VMS copper mines, a nickel-copper deposit and over 20 additional known mineral occurrences.
- There has been no significant exploration for copper since 1977 and no significant exploration for nickel since 2006.





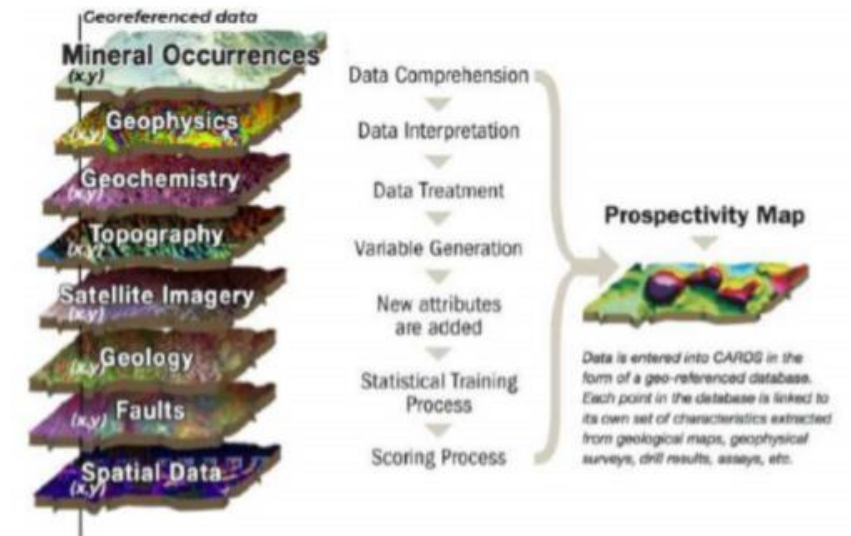
# RKV Project

## The New Exploration Approach

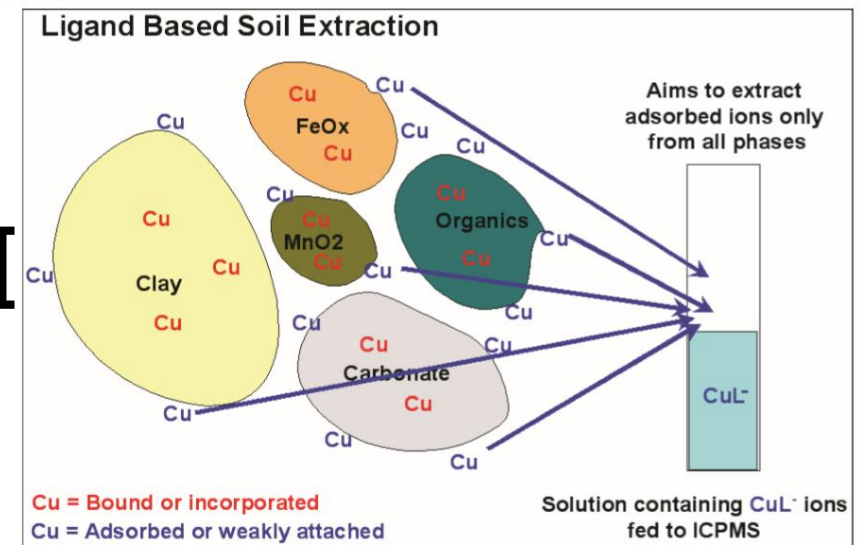
- ✓ Playfair carried out a two-stage filter approach to select the most prospective targets for drilling.
- ✓ The first filter used an artificial intelligence (AI) method to identify areas with a high statistical probability of similarity to known areas of mineralization therefore limiting target areas for exploration.
- ✓ The second filter used mobile metal ions (MMI) soil sampling, an innovative geochemical method.
- ✓ Selected targets were refined by drone magnetic surveys.

TSX.V PLY Frankfurt - P1J1 OTC - PLYFF

AI



MMI



# RKV Project Drill Targets

Areas with high similarity to known mineralization and high MMI responses were selected for drilling.

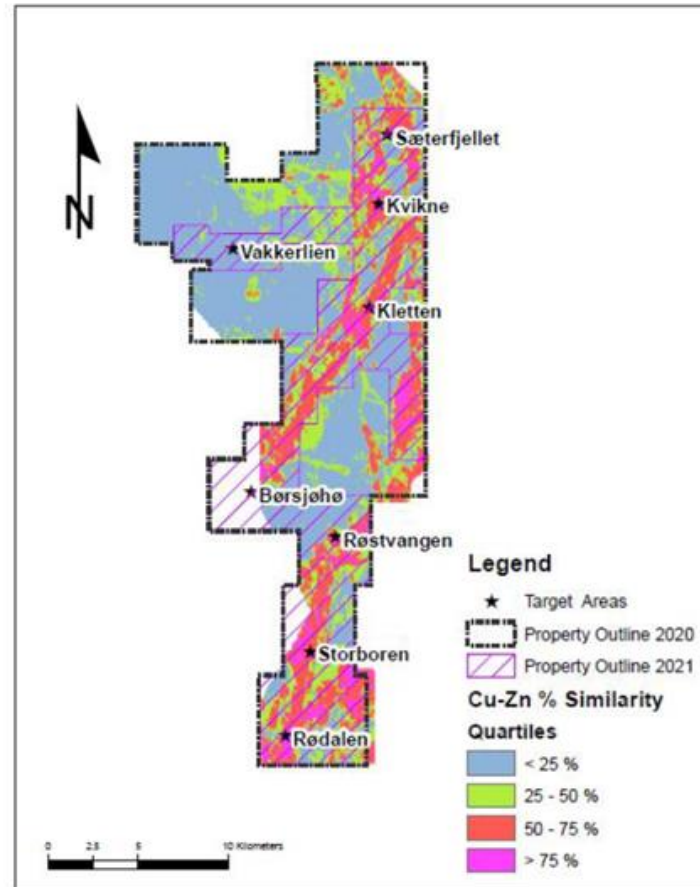
The vast majority (90%) of samples collected at RKV have MMI Cu values of less than 2,730 ppb (20 times background).

Very few (2.5%) of samples collected at RKV have MMI Cu values greater than 6,825 ppb (50 times background).

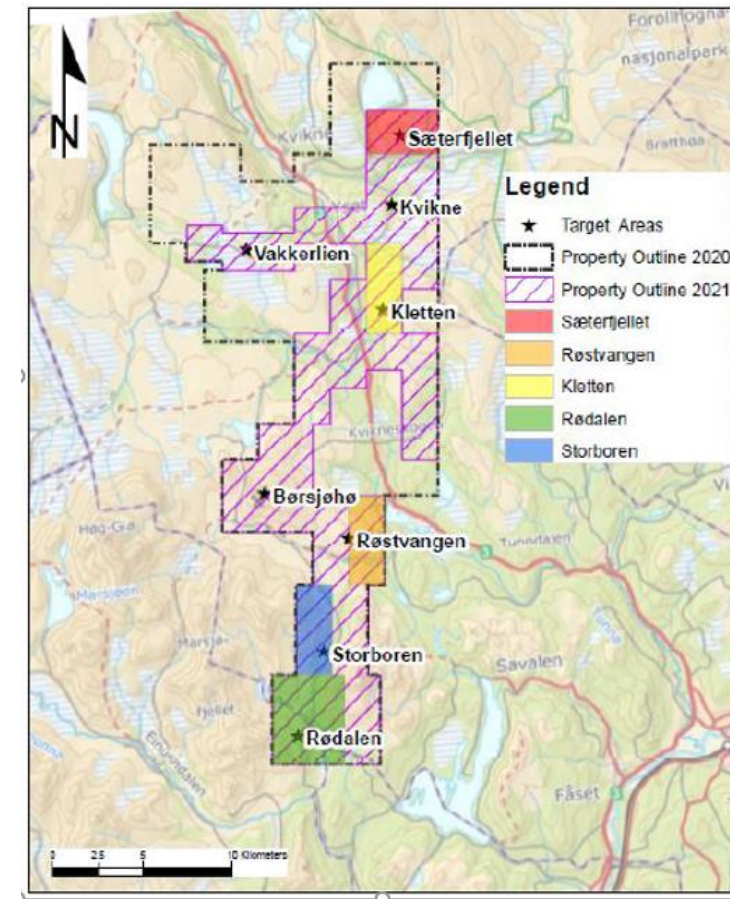
Seven drill targets were selected in five areas.

TSX.V PLY Frankfurt - P1J1 OTC - PLYFF

AI Similarity VMS Model



Drill Notifications





# RKV Project

## Man-Portable Drill at Rødalen

7

TSX.V PLY Frankfurt - P1J1 OTC - PLYFF



# RKV Project

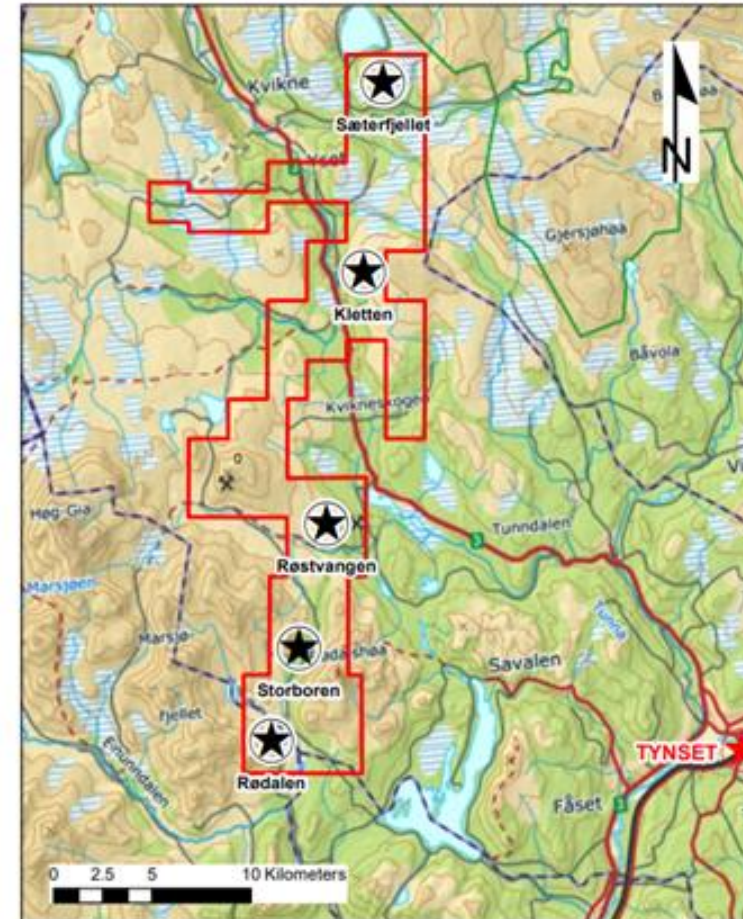
## Drill Program 2022

- ✓ Complete Drilling at Storboren
- ✓ Drill Røstvangen.
- ✓ Drill Kletten
- ✓ Drill Sæterfjellet

TSX.V PLY Frankfurt - P1J1 OTC - PLYFF

PLAYFAIR  
MINING LTD.

## RKV Project, Norway Planned Drill Areas



- Coordinate System: WGS 1984 UTM Zone 32N
- Property Outline
  - Planned Drill Areas
  - Tynset

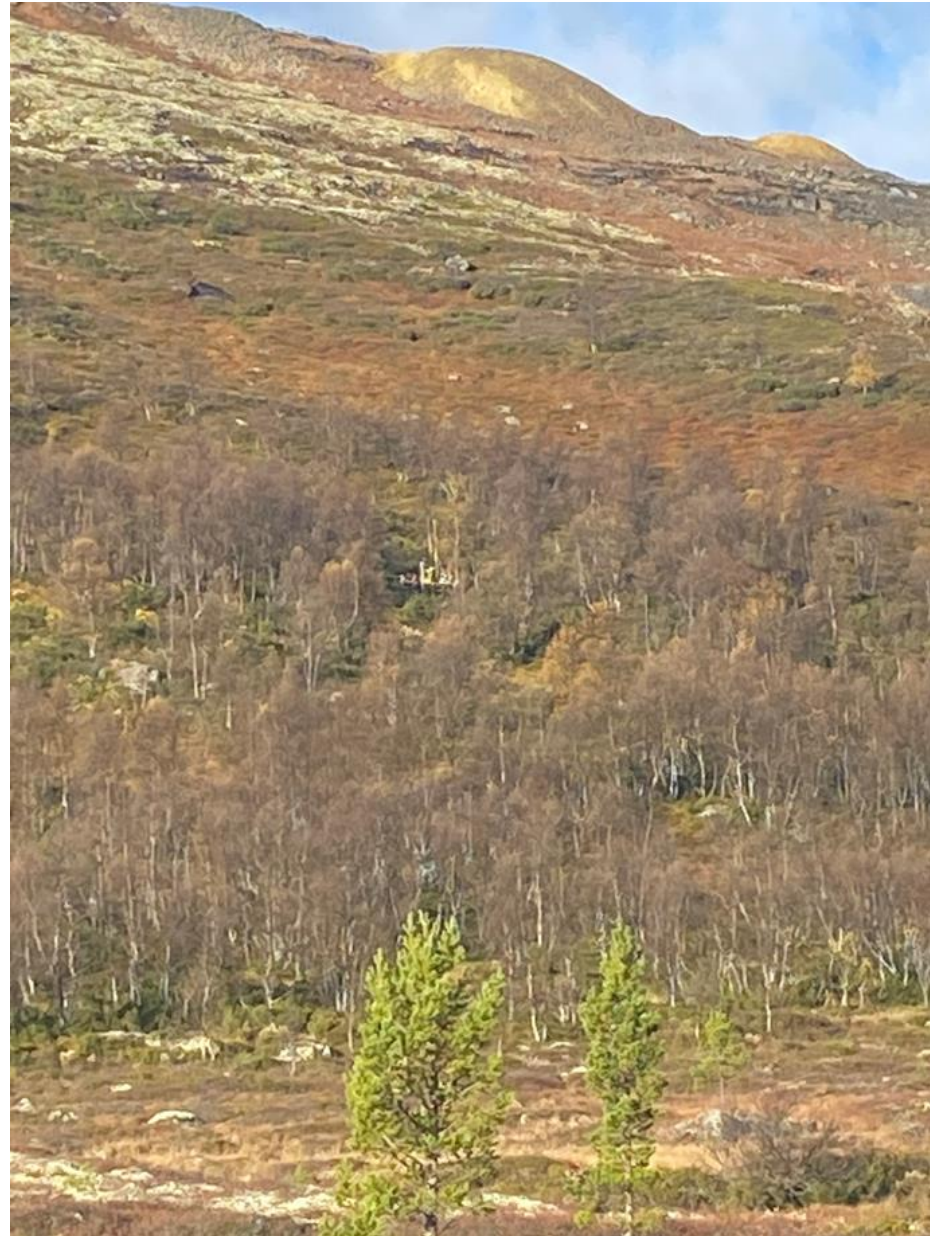
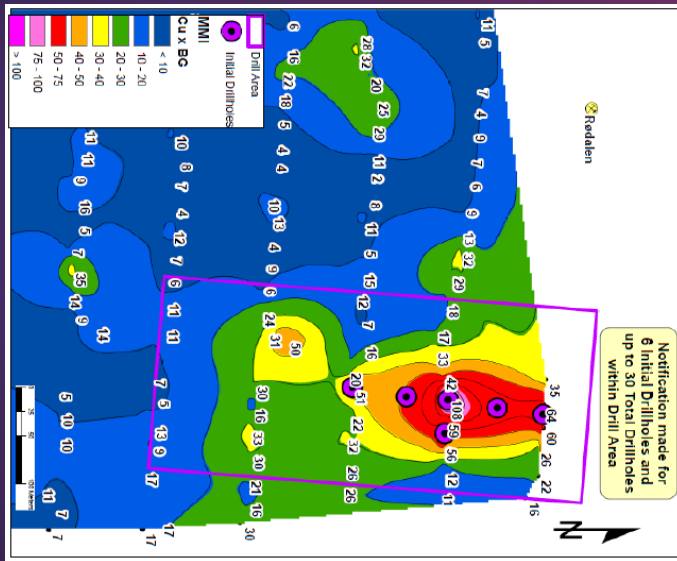


# Playfair Mining

TSX.V PLY Frankfurt - P1J1 OTC - PLYFF

## RKV Project, Norway

### RØDALEN DRILL TARGET



# Playfair Mining

TSX.V PLY Frankfurt - P1J1 OTC - PLYFF

## RKV Project, Norway

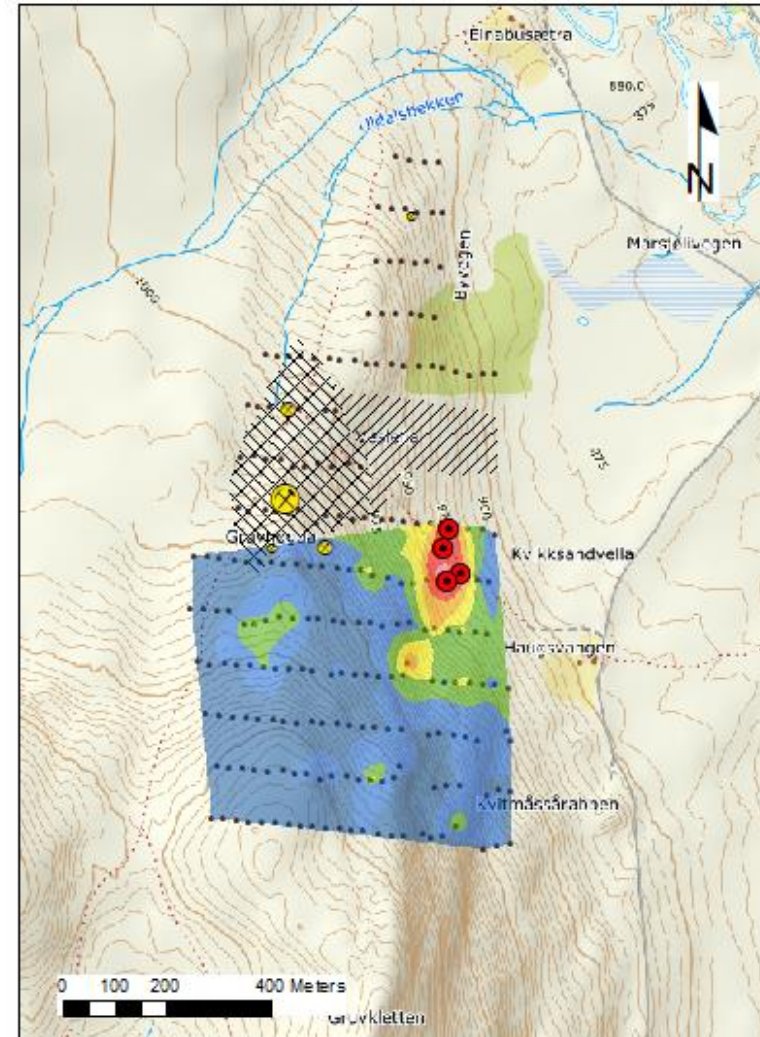
### RØDALEN 2021 Drilling

- 4 short vertical drillholes totaling 154.6m near base of steep slope.
- Amphibolite unit 2 to 4 M thick within mica-garnet schist.
- Sulphide layers in amphibolite gave no significant economic values.
- Possible contamination from old mines on hilltop.

10

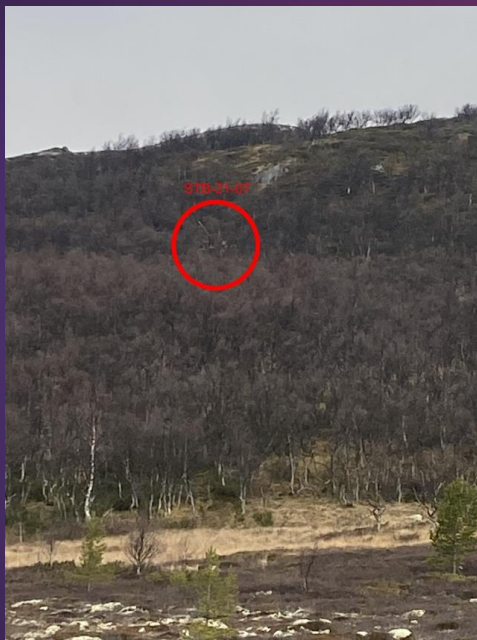
#### Rødalen

Topography, Showings, MMI Cu and 2021 Drillholes

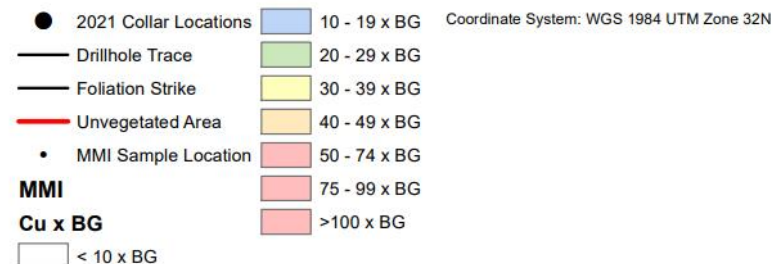
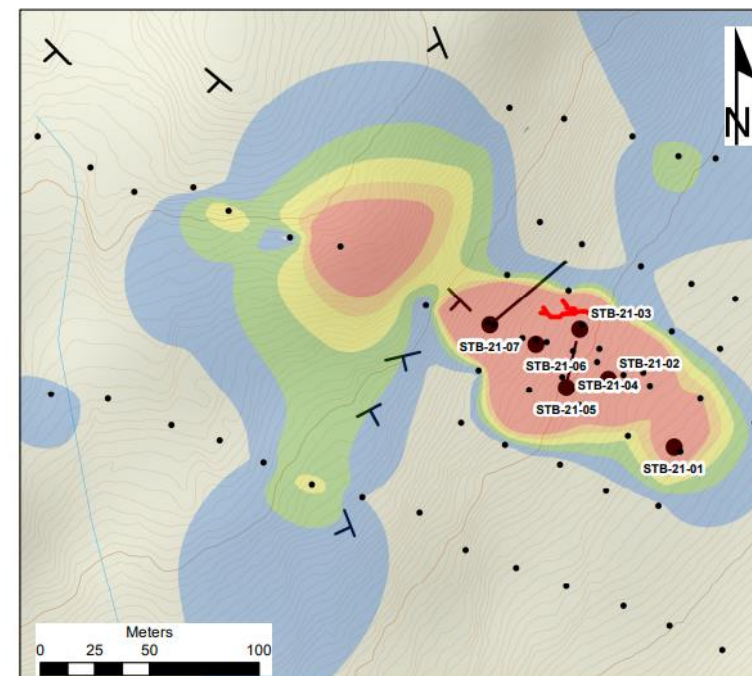




# RKV Project Storboren 2021 Drilling



## RKV Copper Project, Norway Storboren Target





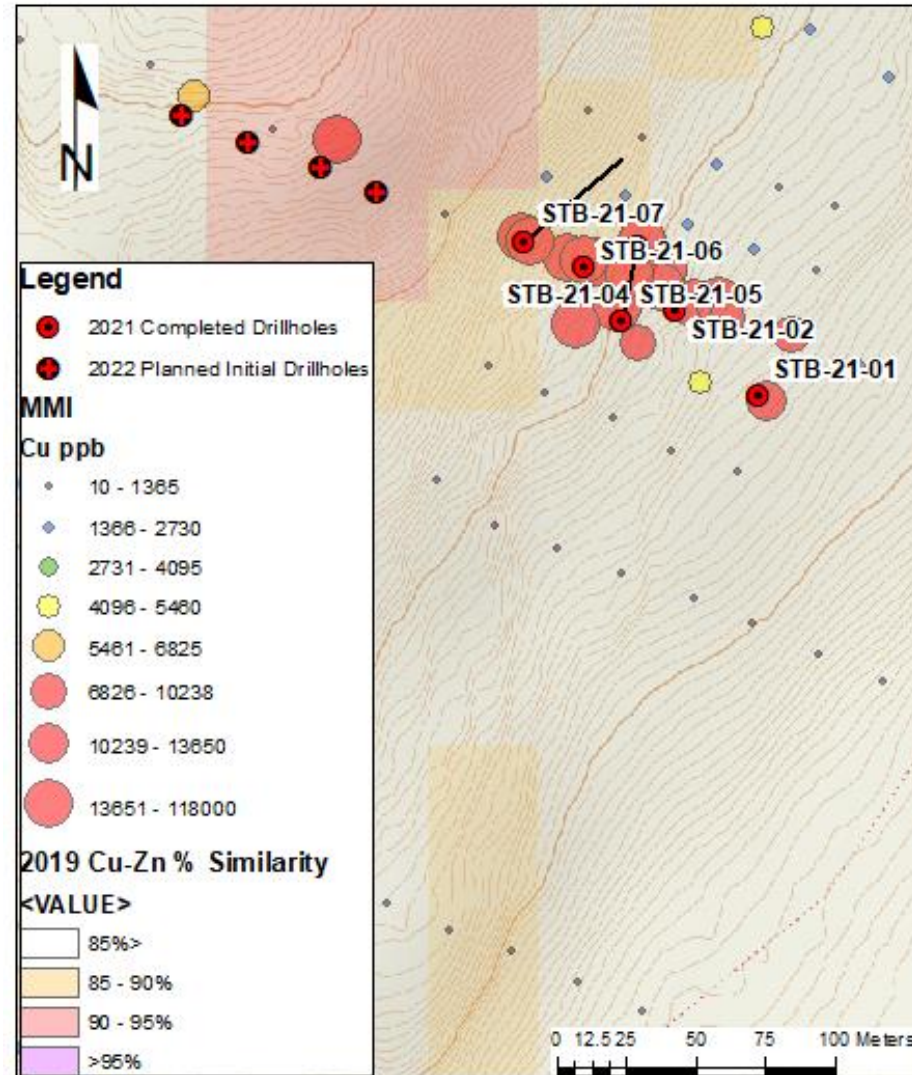
# RKV Project

## RKV Project Storboren 2021 Drilling

- 7 short drillholes totaling 385.1 m  
Starting at base of steep slope and working upslope.
- First 6 holes encountered mica-garnet schist and phyllite. No significant sulphides.
- 7<sup>th</sup> hole, highest upslope hit 7 zones, 2-6 m wide of mafic-ultramafic sections containing sulphide zones with anomalous but not economic Cu and Zn values.

TSX.V PLY Frankfurt - P1J1 OTC - PLYFF

### Storboren Initial Upslope Drillholes 2022 2021 drillholes and CARDS % VMS Similarity



# RKV Project

## RKV Project Storboren 2022 Drill Plans

- Test area upslope from drillhole SBN-21-07 and upslope of vegetation Kill Zone with mineralized float assaying assayed 1.265% copper, 3.24% zinc, 0.199 gpt gold and 16.45 gpt silver.

TSX.V PLY Frankfurt - P1J1 OTC - PLYFF

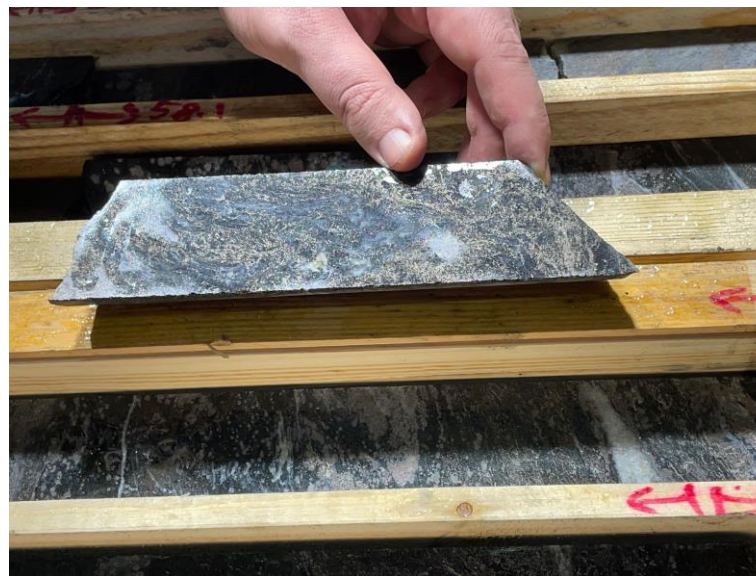
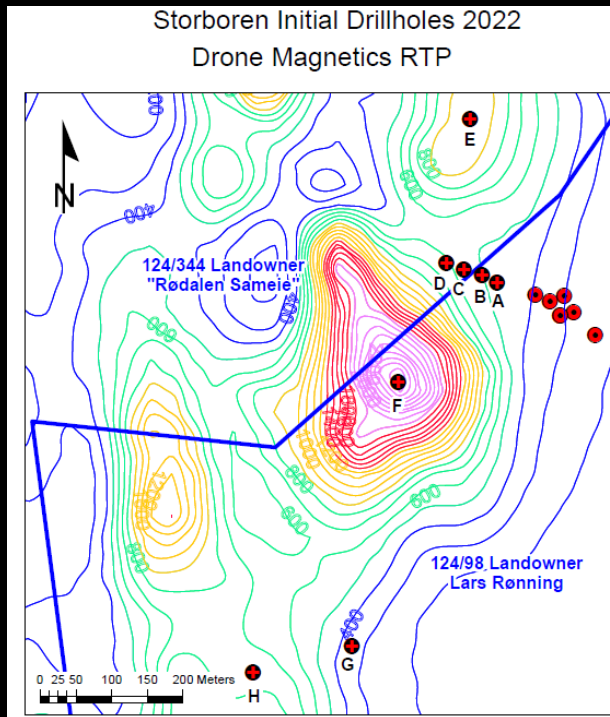


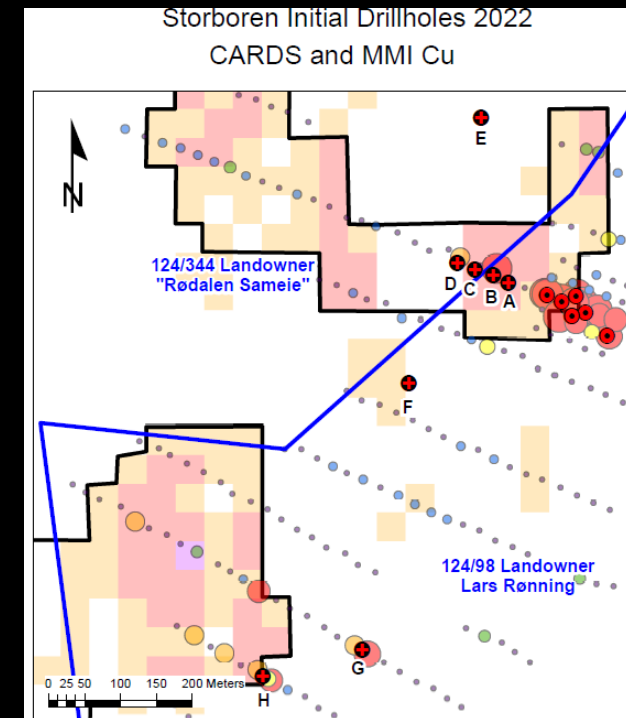
Figure 14: Dead zone without vegetation (sample S2 and S3, 25 m NW drill site STB-21-05), about 20-30 m long, 1-4 m wide tongue-shaped zones from 2 upwelling groundwater sources (cold- or poisoned water, blue line on upper map figure) about 25-40 m ENE of drill site STB-21-07.

# RKV Project Storboren 2022 Drill Plans

TSX.V PLY Frankfurt - P1J1 OTC - PLYFF



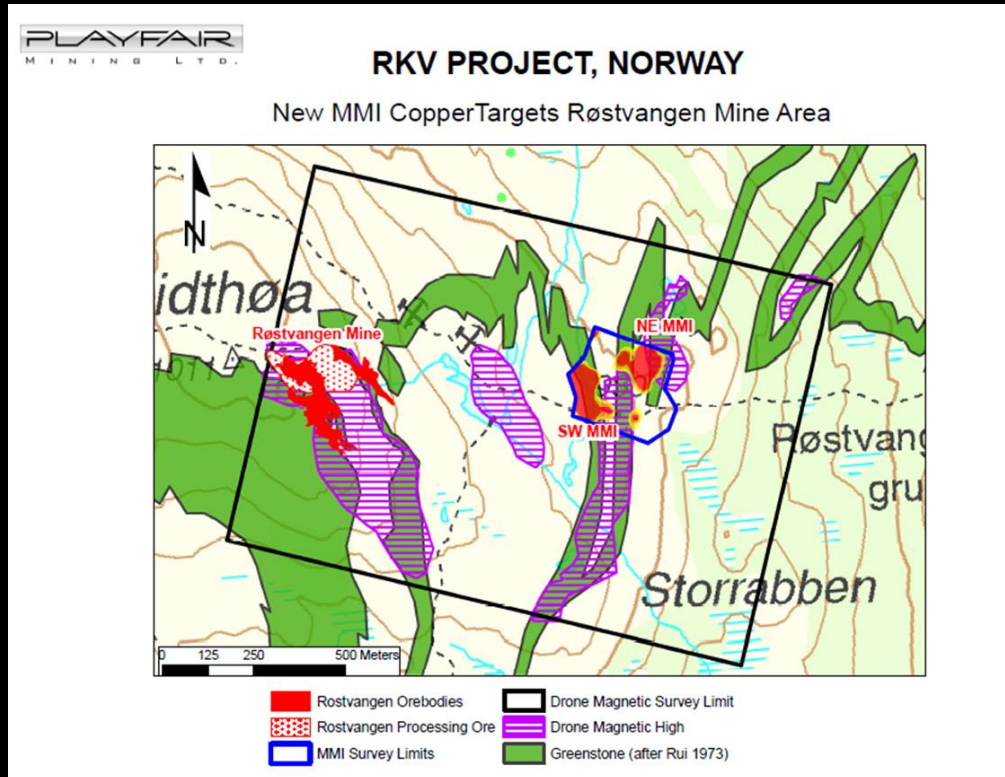
In addition to the 4 upslope drillholes, 2 holes are planned to test magnetic highs and 2 holes to test MMI high Cu responses.





# RKV Project Røstvangen 2022 Drill Plans

TSX.V PLY Frankfurt - P1J1 OTC - PLYFF



Røstvangen Mine was discovered in 1905 and worked from 1908 to 1921 when it was abruptly closed due to falling copper prices in a worldwide economic crisis. A total of 388,070 tonnes grading 2.65% copper is reported to have been mined.

Playfair has discovered two significant targets only 800 metres east of the former Røstvangen Mine and at the same stratigraphic level.

There is no record of drilling in the area of these targets.

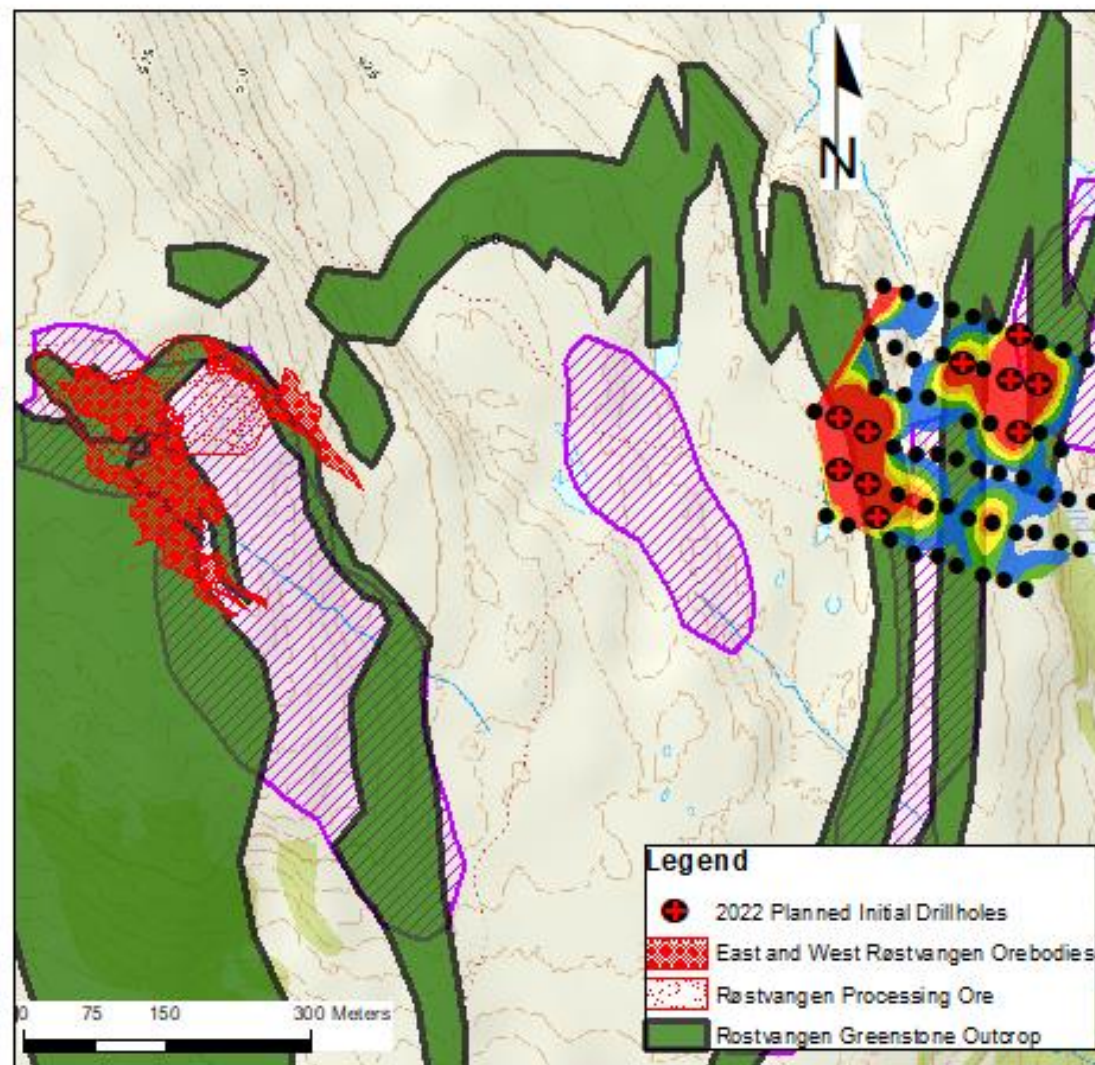
# RKV Project

## RKV Project Røstvangen 2022 Drill Plans

- 10 short vertical drillholes are planned to initially test the two high MMI Cu anomalies.
- Notifications have been given for up to 40 holes in the event of success.
- The planned drill areas are not steeply sloping.

TSX.V PLY Frankfurt - P1J1 OTC - PLYFF

Røstvangen Initial Drillholes Planned 2022



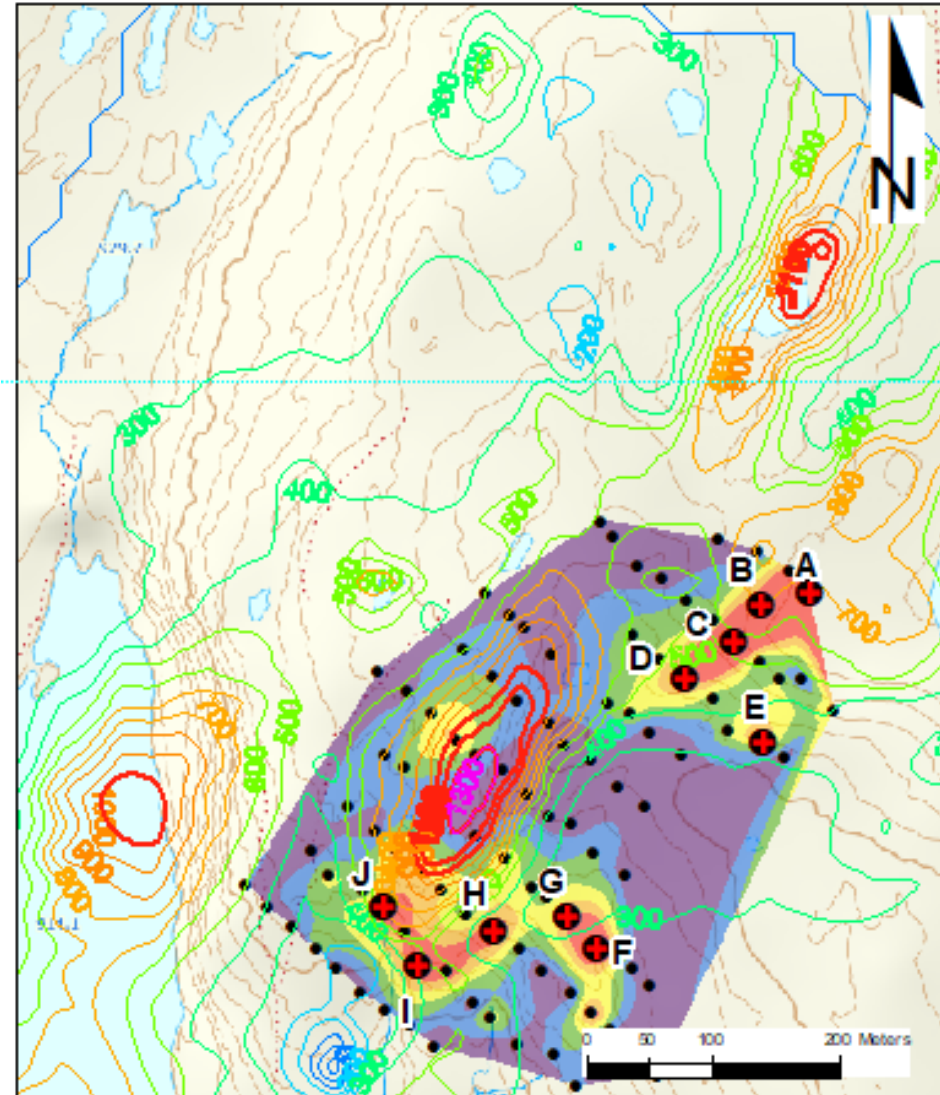
# RKV Project

## RKV Project Kletten 2022 Drill Plans

- 10 short vertical drillholes are planned to initially test the two high MMI Cu anomalies flanking a high magnetic anomaly.
- Notifications have been given for up to 40 holes in the event of success.
- The planned drill areas are on a fairly flat plateau.
- There is no record of previous exploration in the drill areas.

TSX.V PLY Frankfurt - P1J1 OTC - PLYFF

Kletten 2022 Drill Plans  
MMI Cu, RTP Drone Magnetics, Initial Planned Drillholes





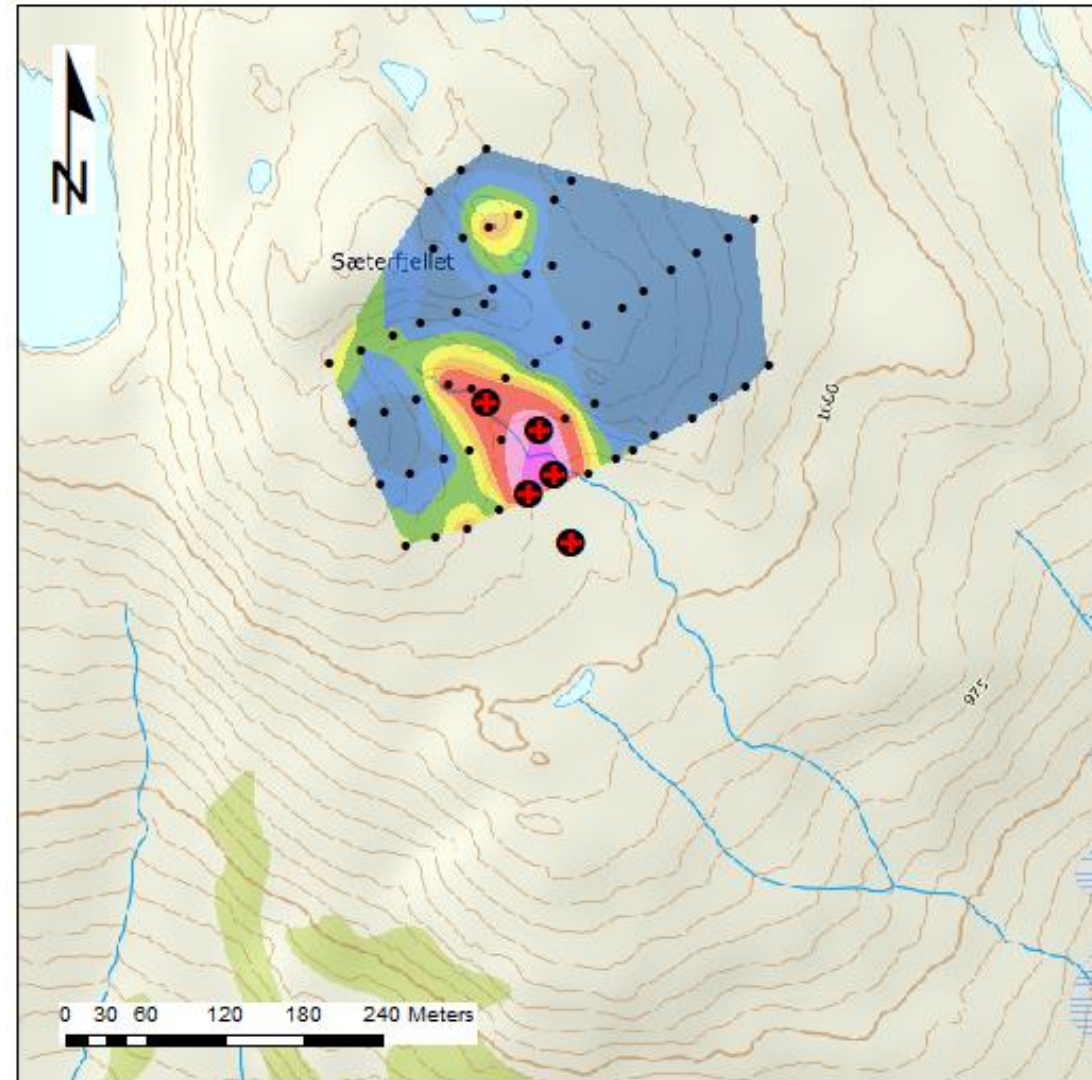
# RKV Project

## RKV Project Sæterfjellet 2022 Drill Plans

- 5 short vertical drillholes are planned to initially test the high MMI Cu anomalies flanking a high magnetic anomaly.
- Notifications have been given for up to 20 holes in the event of success.
- The planned drill area is on moderately sloping high ground.
- There is no record of previous exploration in the drill area.

TSX.V PLY Frankfurt - P1J1 OTC - PLYFF

### Sæterfjellet 2022 Drill Plans MMI Cu and Initial Planned Drillholes



# Two Projects but Three Deposit Types

- ▶ Playfair's two projects in Norway contain known, and in some cases previously mined, mineral deposits of three types.
- ▶ The newly acquired Folldal Project contains four former copper/zinc mines and numerous sulphide occurrences. These are all classed as siliciclastic-felsic Volcanogenic Massive Sulphide (VMS) deposits and often contain significant gold and silver.
- ▶ The RKV Project contains four known copper/zinc pelitic-mafic VMS deposits and many sulphide occurrences. This type of deposit commonly contains significant cobalt.
- ▶ Additionally, the RKV Project contains a known drilled magmatic nickel/copper deposit and two other nickel/copper occurrences.
- ▶ The prospective area for each of these three deposit types is district scale and covers tens of square kilometers. Until Playfair's recent work there has been little exploration in the last fifty years.

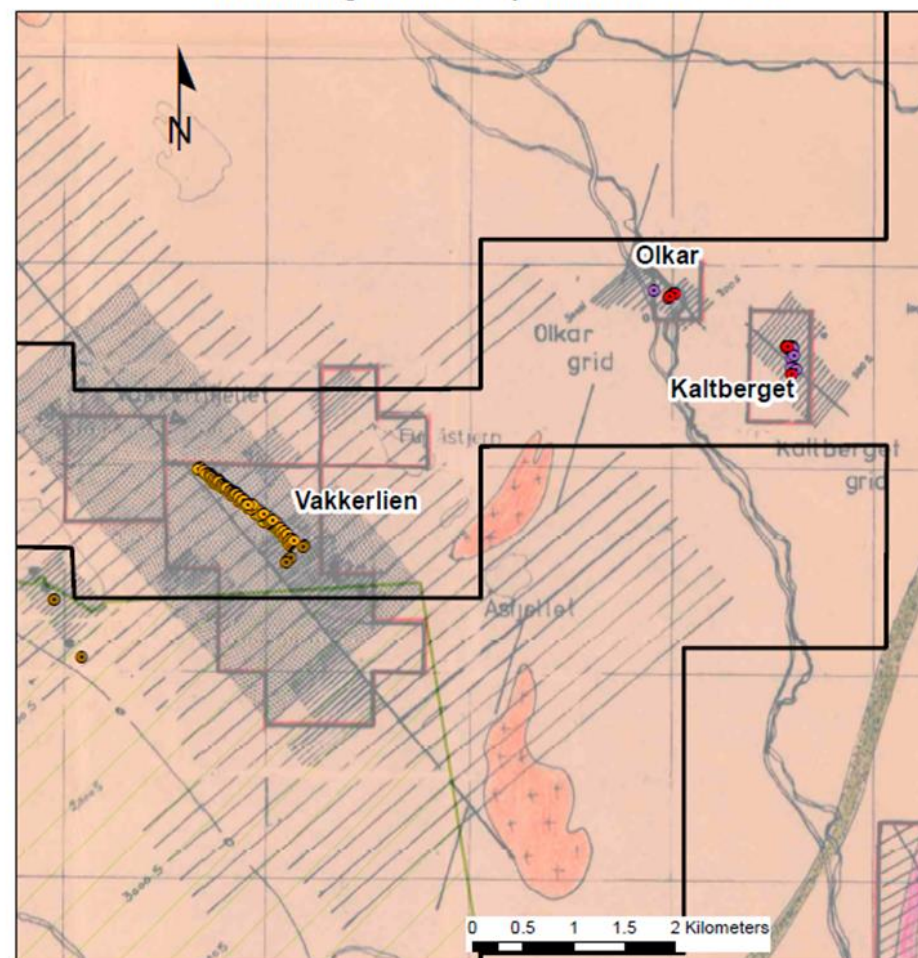
# RKV Project Nickel Exploration

- ▶ 1974 to 1977 Exploration by Falconbridge.
- ▶ Drilling, mapping and geophysics at Valkkerlien, Kaltberget and Olkar.
- ▶ Falconbridge in house resource calculation and PEA for Vakkerlien.

PLAYFAIR  
MINING LTD.

## RKV Project, Norway

Falconbridge Nickel Exploration 1974 - 1977





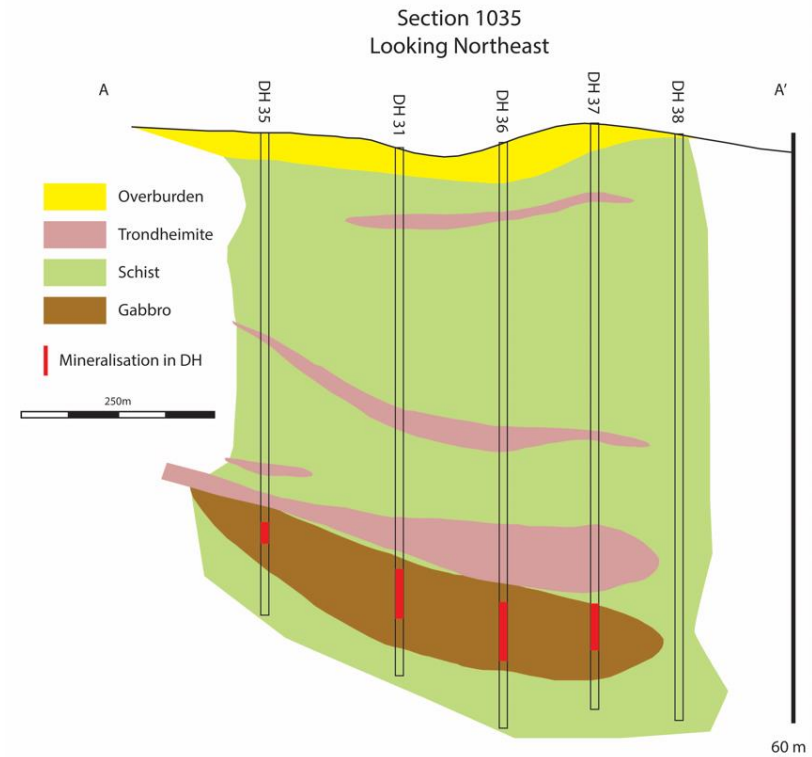
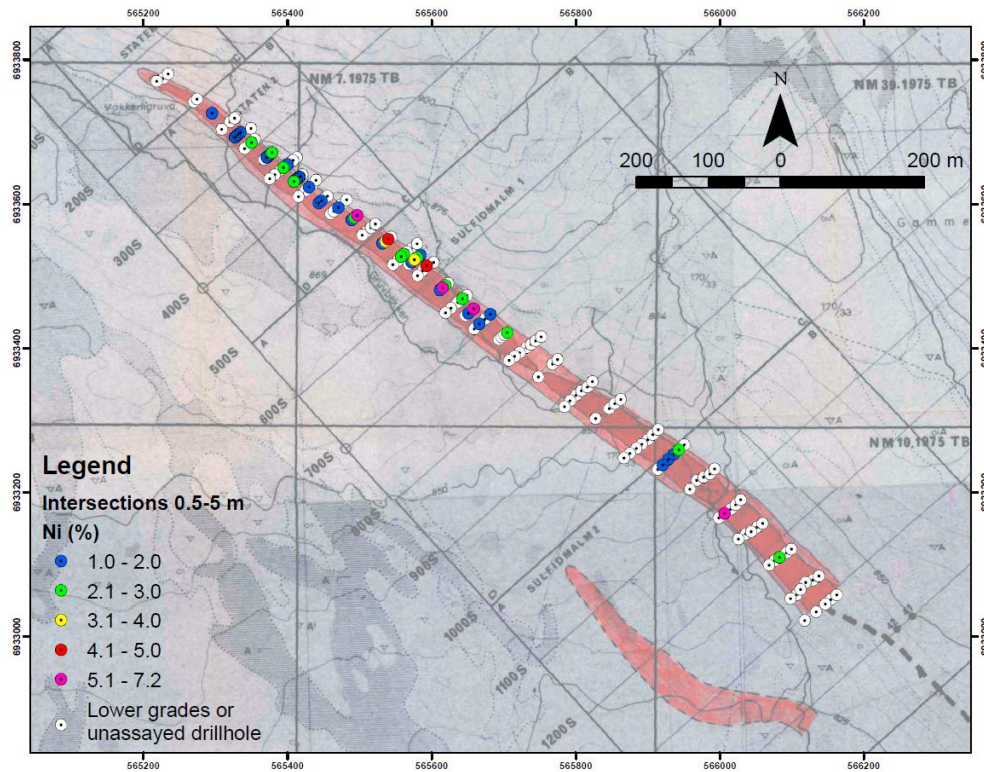
# Playfair Mining

## NICKEL EXPLORATION IN SOUTH CENTRAL NORWAY

TSX.V PLY Frankfurt - P1J1 OTC - PLYFF

### VAKKERLIEN

- 1975 – 1977 Sulfidmalm (a Falconbridge Nickel Mines subsidiary)
  - Discovery of nickel by sampling a copper showing known for 75 years.
  - Ground geophysical surveys
  - 109 holes drilled.
  - A non-compliant NI 43-101 resource calculated of 400,000 tonnes grading 1.0% Ni and 0.4% Cu at a 0.4% Ni cut-off.
  - Metallurgical testing yielded a concentrate grading 15.5% Ni @ 80% recovery and 7.0% Cu at 92% recovery.
- 1991 – 1992 Norsulfid (J/V between FolldalVerk and Outokumpu)
  - 100 holes drilled to confirm resource.



# Vakkerli

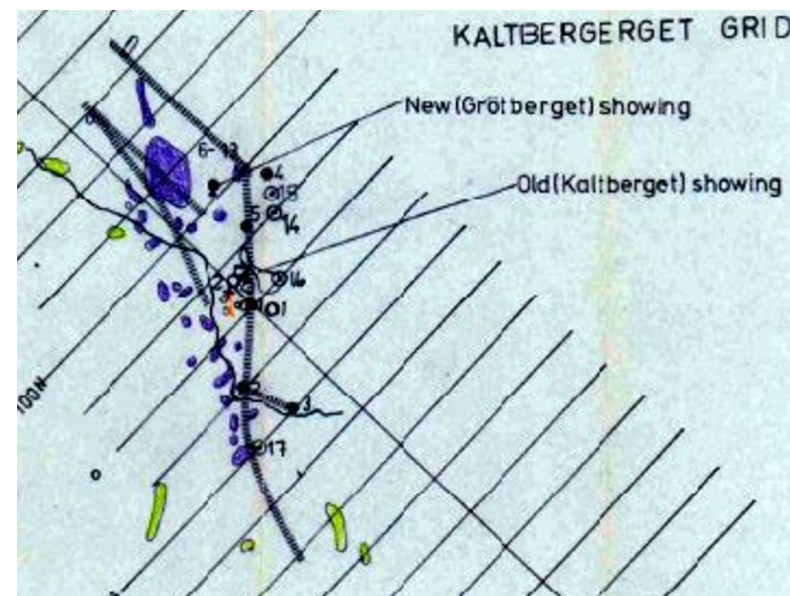
# Playfair Mining

## NICKEL EXPLORATION IN SOUTH CENTRAL NORWAY

TSX.V PLY Frankfurt - P1J1 OTC - PLYFF

### KALTBERGET

- Kaltberget 1976 – 1977 Sulfidmalm
  - Ground geophysical surveys.
  - 1976 13 holes totaling 609.85m. Best result 1.60% Ni, 0.30% Cu over 5.5m.
  - 1977 4 holes totaling 324.1 m. Best result 1.55% Ni, 0.48% Cu over 0.5m.



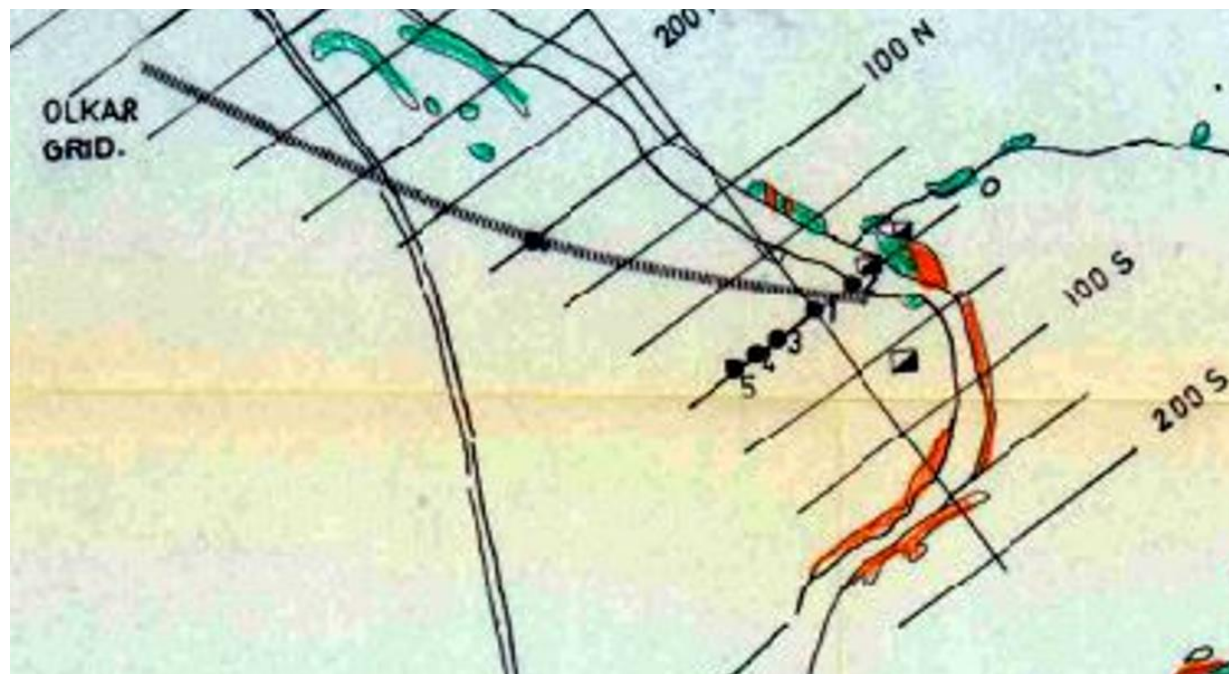


# Playfair Mining

## NICKEL EXPLORATION IN SOUTH CENTRAL NORWAY

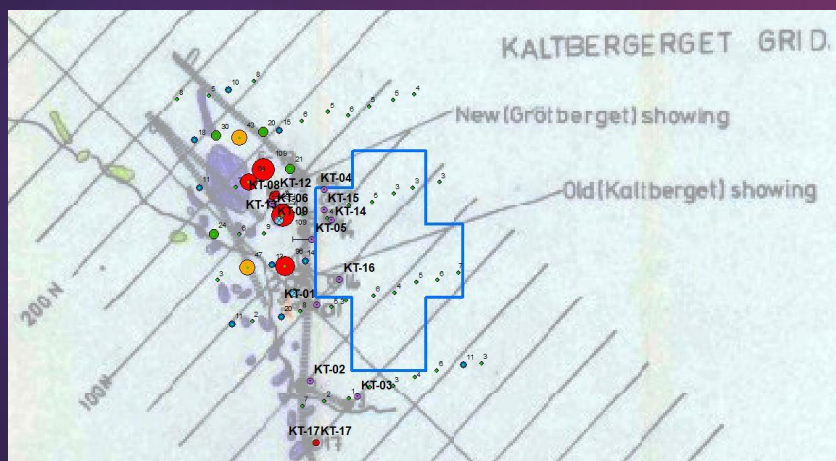
### OLKAR

- Olkar 1975 – 1976 Sulfidmalm
  - Ground geophysical surveys.
  - 1976 6 holes totaling 269.9 m. Best result 1.78% Ni, 1.18% Cu over 1.5m.



TSX.V PLY   Frankfurt - P1J1   OTC - PLYFF

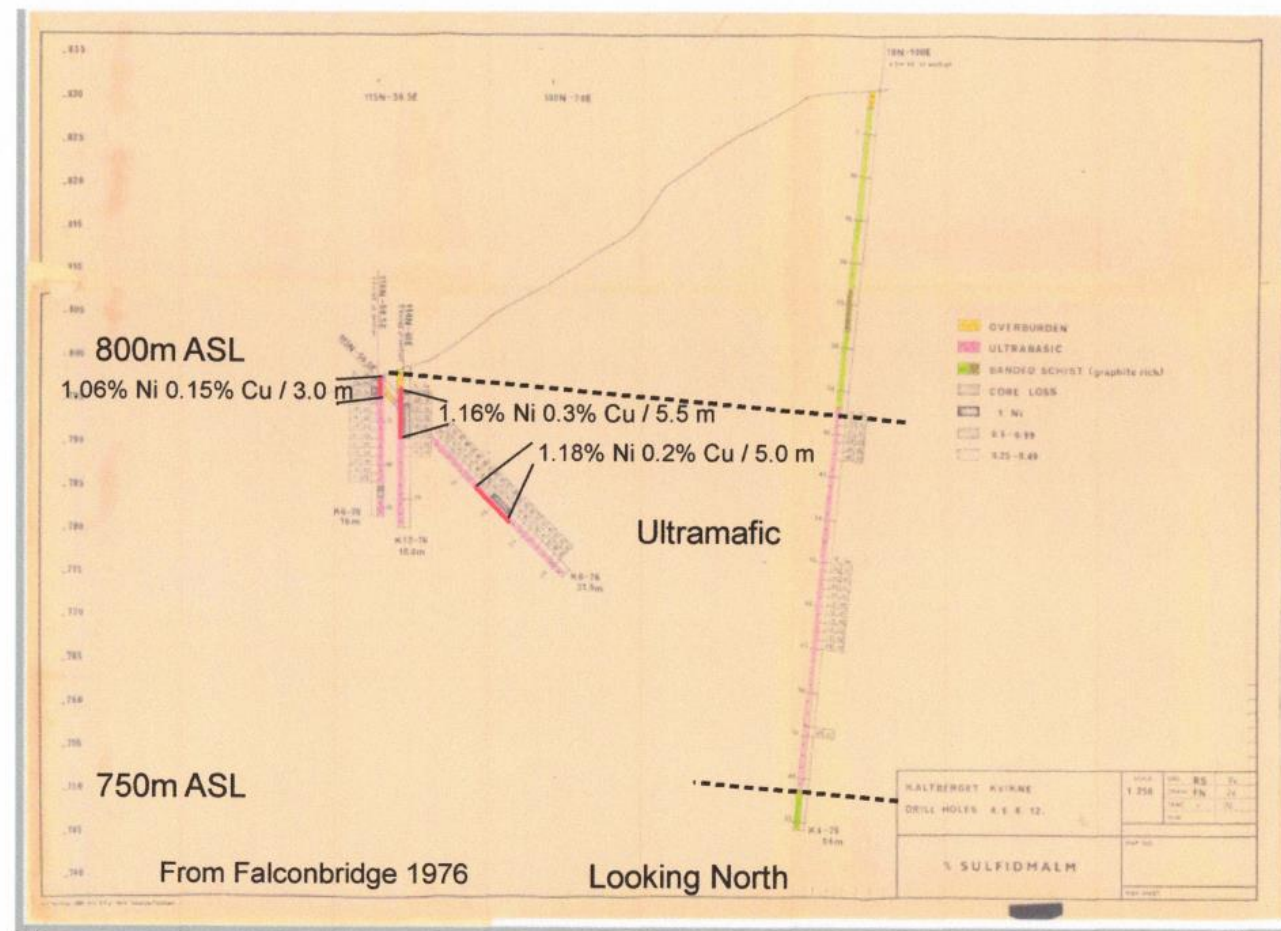
Kaltberget  
CARDS target,  
MMI Ni and  
Sulfidmalm  
drillholes



PLAYFAIR  
MINING LTD.

## RKV Project, Norway

### Schematic Cross Section Kaltberget Showing



# Other Nickel Targets at RKV

- ▶ 7 interesting magnetic high anomalies
- ▶ 6 MMI Ni responses
- ▶ A large ultramafic intrusion



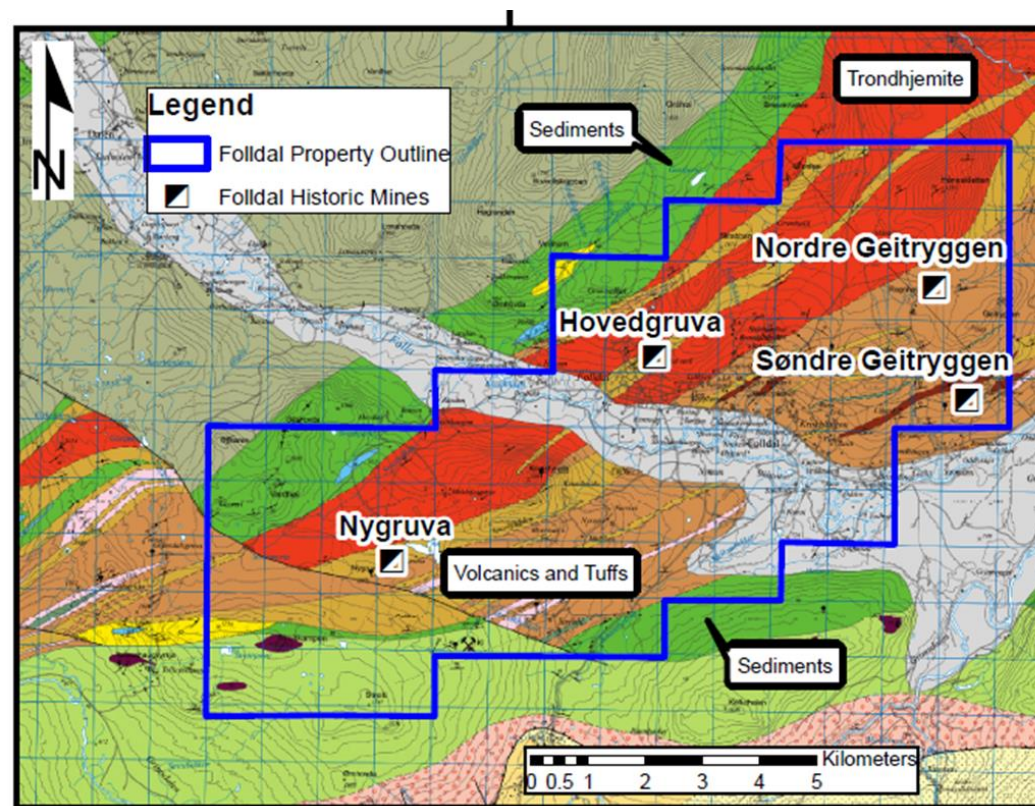
# Playfair Mining

## FOLLDAL PROJECT

- ACQUIRED BY STAKING.
- NO UNDERLYING PROPERTY DEALS OR ROYALTIES.
- 4 FORMER PRODUCING VMS MINES, STARTING IN 1747.
- NO SIGNIFICANT EXPLORATION IN THE LAST 40 YEARS.

TSX.V PLY   Frankfurt - P1J1   OTC - PLYFF

## Folldal Project



# Two Projects but Three Deposit Types

- ▶ Playfair's two projects in Norway contain known, and in some cases previously mined, mineral deposits of three types.
- ▶ The newly acquired Folldal Project contains four former copper/zinc mines and numerous sulphide occurrences. These are all classed as siliciclastic-felsic Volcanogenic Massive Sulphide (VMS) deposits and often contain significant gold and silver.
- ▶ The RKV Project contains four known copper/zinc pelitic-mafic VMS deposits and many sulphide occurrences. This type of deposit commonly contains significant cobalt.
- ▶ Additionally, the RKV Project contains a known drilled magmatic nickel/copper deposit and two other nickel/copper occurrences.
- ▶ The prospective area for each of these three deposit types is district scale and covers tens of square kilometers. Until Playfair's recent work there has been little exploration in the last fifty years.

# Playfair Mining

## RKV Project, Norway

TSX.V PLY Frankfurt - P1J1 OTC - PLYFF

### Share Structure:

Shares Outstanding 106,361,560

Stock Options 10,000,000

Financing 14 million shares at \$0.075 for proceeds of \$1,050,000

### Major Shareholders:

- Insiders and Friends 9%
- European Institutional 15%
- Al Brimacombe 19.9%
- EMX 9.9%

### Management:

Donald G. Moore – CEO & Director  
Tel: 604-377-9220

[dmoore@wascomgt.com](mailto:dmoore@wascomgt.com)

D. Neil Briggs – Director  
Tel: 604-562-2578

[nbriggs@wascomgt.com](mailto:nbriggs@wascomgt.com)

Greg Davison – Director  
Tel: 250-521-0444

[davisonandassociates@gmail.com](mailto:davisonandassociates@gmail.com)

Suite 224 – 470 Granville Street  
Vancouver, BC  
Canada V6C 1V5

Telephone: 604-377-9220  
Toll Free: 1-888-244-6644

[info@playfairmining.com](mailto:info@playfairmining.com)  
[www.playfairmining.com](http://www.playfairmining.com)