

# Mount Uniacke

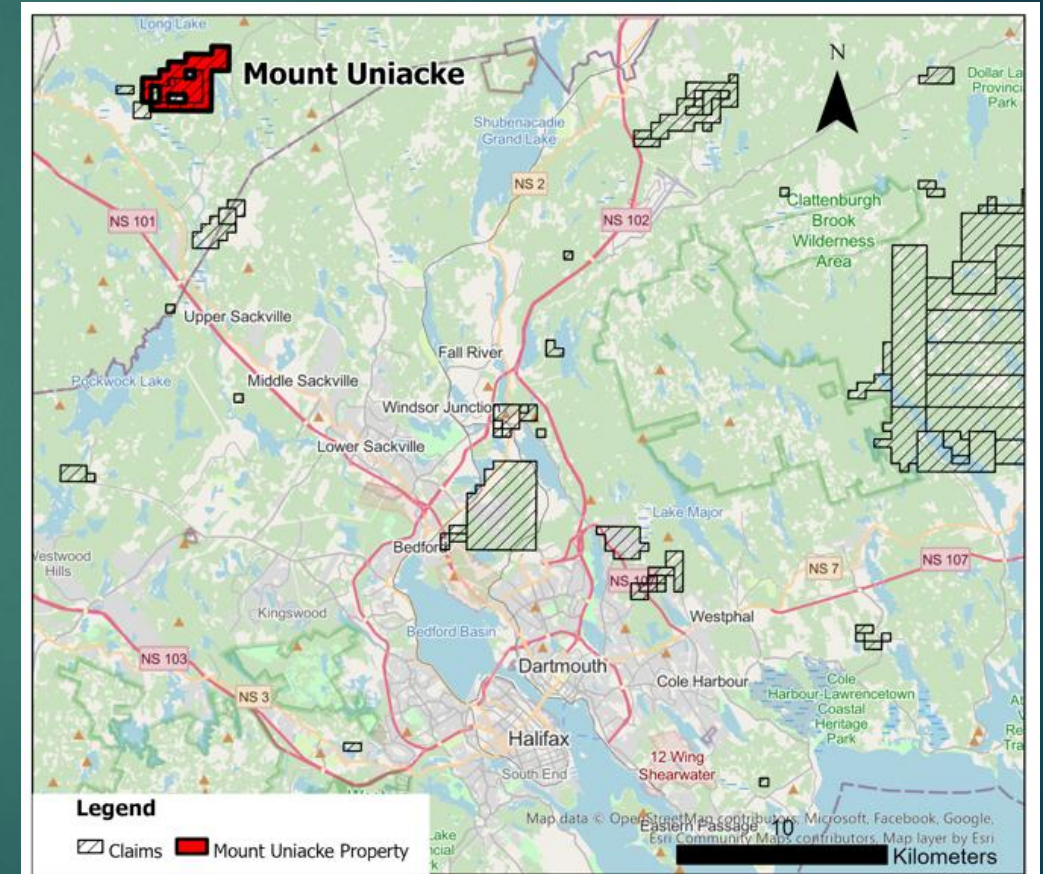
Golden Circle Project  
Nova Scotia, Canada



# Mount Uniacke Golden Circle Project Nova Scotia, Canada

2

Mount Uniacke is an easily accessible, historic gold producer. It is located about 25 km from Halifax.



# Mount Uniacke

## Golden Circle Project

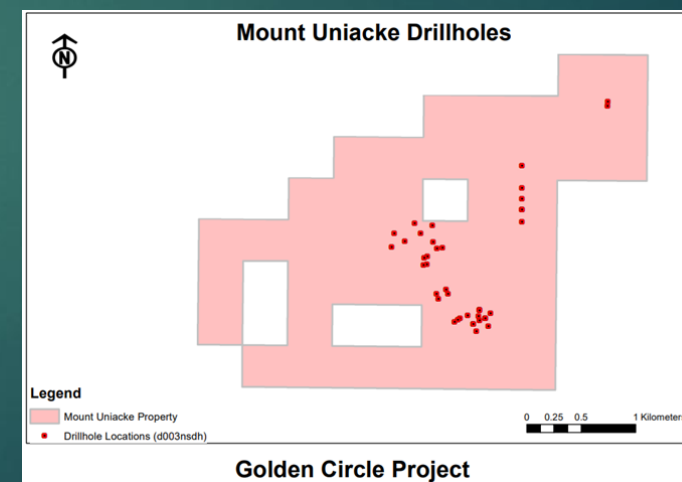
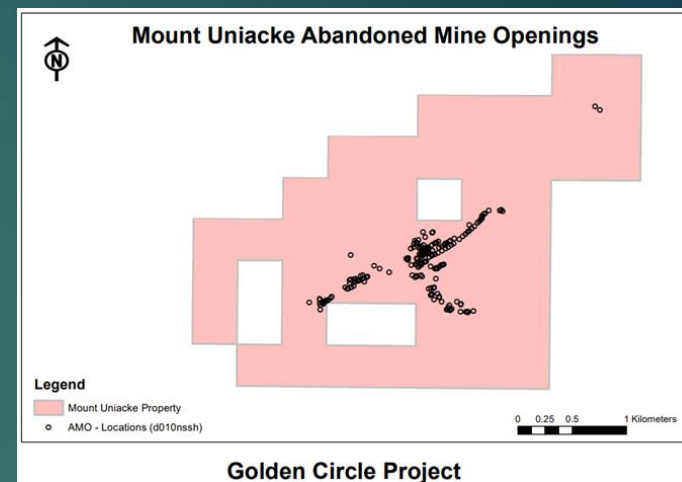
### Nova Scotia, Canada

3

The property comprises 745 hectares covering the bulk of the Mount Uniacke gold district.

The first production of gold was recorded in 1867 and production continued until 1941. Peak annual production was 3,996 oz Au from 4,659 tons of crushed quartz (0.86 oz/ton). A total production of 27,737 ounces of gold is recorded.

193 abandoned mine openings and 32 diamond drillholes are recorded on the property, the most recent drilling was in 1988.





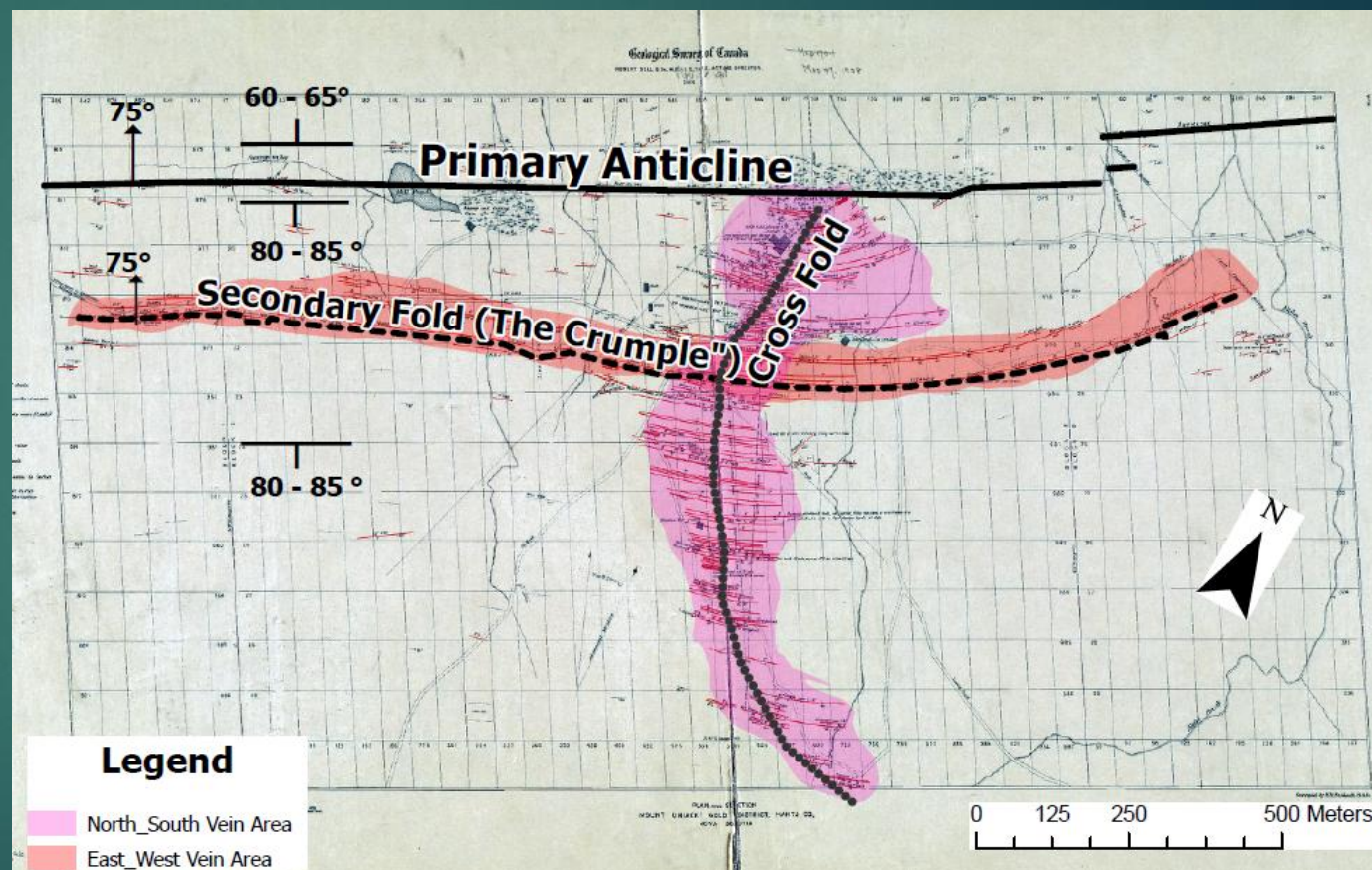
# Mount Uniacke Golden Circle Project Nova Scotia, Canada

4

Gold-bearing quartz veins occur on the South flank of the Mount Uniacke Dome. The veins generally occur in the bedding, which is near vertical.

There are more than 130 veins in 2 well-defined zones, one running south from the center of the dome for 900 meters. The other extending east and west is located 200 meters south and nearly parallel to the Mount Uniacke Anticline.

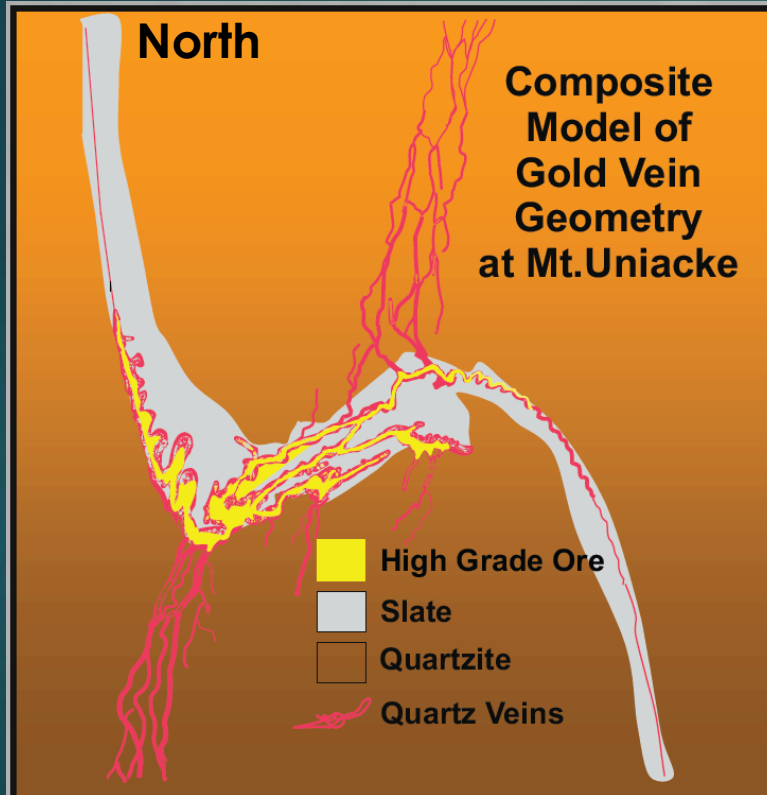
This zone ("The Crumple") has a total length of 1,900 meters and is generally higher grade than the North-South Zone.



Surface Plan by Faribault (1902)

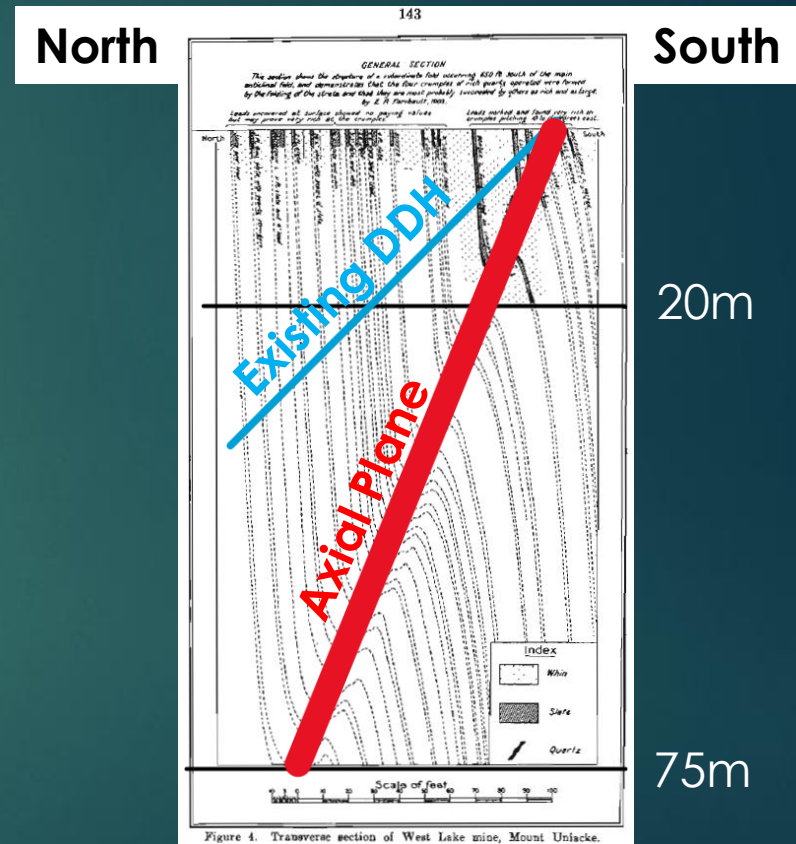
# Mount Uniacke Golden Circle Project Nova Scotia, Canada

5



Detail Underground Cross Section of "The Crumple" Faribault (1902) Recently redrawn by NSDM.

Workings on "The Crumple" seldom exceed 20 meters in depth. The gold-bearing veins of the northern part of the north-south vein area have not been tested at depth where "The Crumple" is expected to occur.



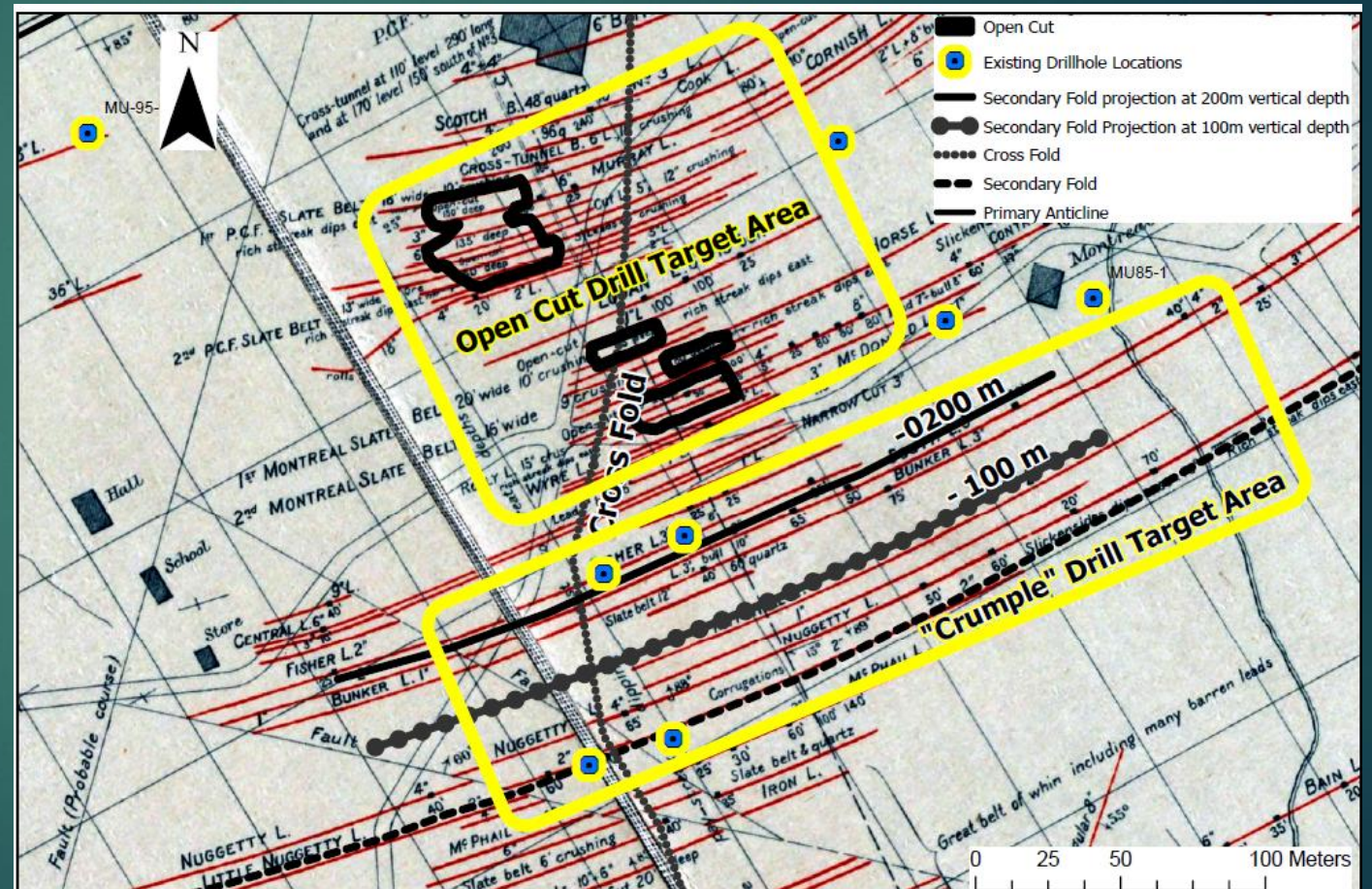
Composite Cross Section of "The Crumple" Based on Faribault published by Malcolm (1929)



The first drill target at Mount Uniacke is the untested depth extension of surface gold-bearing veins where they intersect the axial plane of “The Crumple”.

Two previous drillholes in 1974 were collared where the axial plane of "The Crumple" reaches surface. These holes were flatter than the fold axial plane so did not test the target.

The initial “Crumple “ drill target area is 300 meters long, 75 meters wide and from 50 meters to 200 meters deep.

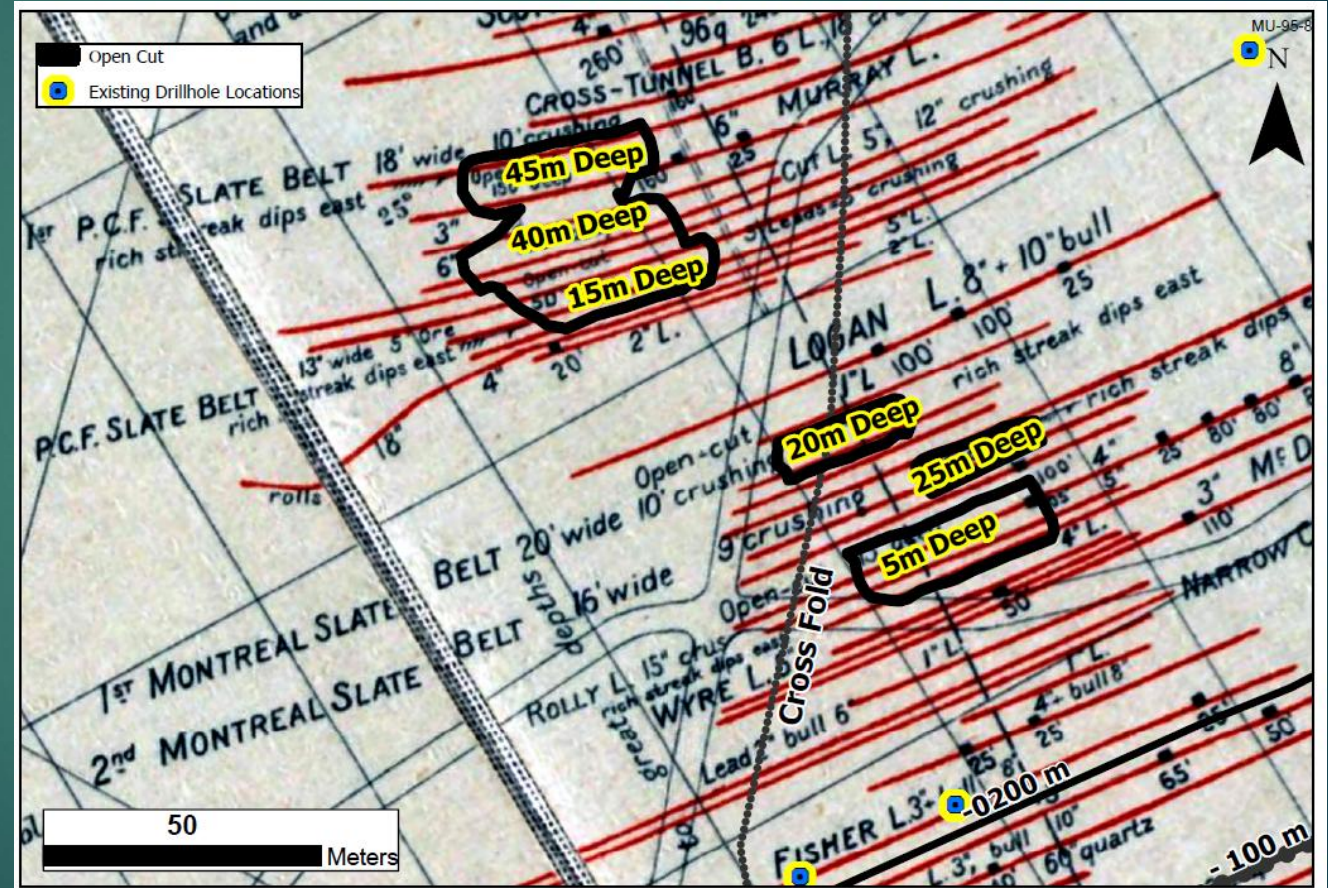




In 1902 and 1903 a total of 289 ounces of gold was recovered from 3,395 tons extracted from the open cuts. This equates to 0.085 opt or 2.92 gpt.

Only one old drillhole tested the general area (0.82 opt over 1 foot). But this was to the west of the open cuts. The “pay streaks” in the near-vertical veins in this area plunge east at around 25° to 35°.

The down-plunge continuation of the open cuts has not been drilled. The drill target is 150 meters by 125 meters and deeper than 50 meters.



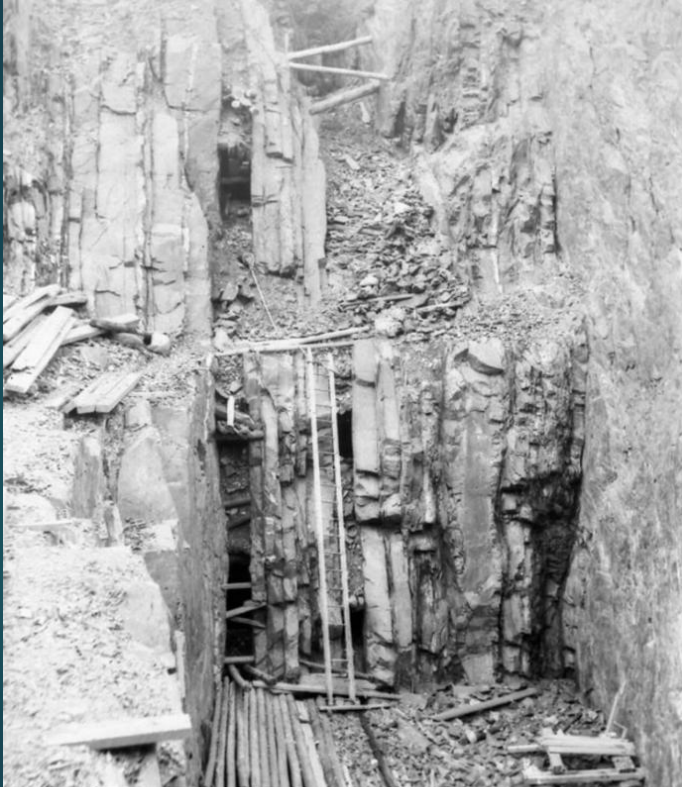


# Mount Uniacke

## Golden Circle Project

### Nova Scotia, Canada

8



Open Cut

Mount Uniacke gold district, Halifax Co., Nova Scotia, Canada

Library and Archives Canada, MIKAN 3373922, 'West end of open-cut, showing belt of interbedded quartz veins worked by the C.P.F. Gold Mining Co., Mount Uniacke, Hants Co., N.S. 1896' Published by the Dept. of Mines, Canada, 1912 in Wyatt Malcolm's Gold Fields of Nova Scotia as Plate IX.

